



“For the second quarter of 2011, we are extremely pleased with our year-over-year growth in all three geographic regions, especially sequential double digit growth in the Americas and APAC. We continue to carry positive momentum out of a very strong first quarter, and our new products continue to exceed our expectations and enable us to gain market share. Q2 2011 also marks another quarter of record revenue.”

-Patrick Lo,
Chairman and CEO

NETGEAR® SOLUTIONS FOR SMART IT, NOT BIG IT.

As a successful midsize enterprise, you know that information technology investments are required to improve your bottom line and maximize your competitive advantage. Continuing to grow while reducing costs requires alternative solutions such as cloud computing, mobility, and virtualization. However, the big IT approaches of traditional monolithic vendors are expensive, complex, and resource intensive. Instead, you require smart IT solutions – with reliability, affordability and simplicity at their core.

That’s where NETGEAR can help. Solutions for midmarket businesses are a NETGEAR specialty. With Industry-leading warranties and support programs, a rich set of features at an affordable price, and consistency across products for enhanced ease of use, NETGEAR has what it takes to serve your needs. Simply put, we help you build smart IT, not big IT.

SOLUTIONS

Virtualization

Gartner reports that midmarket adoption for virtualization is growing even faster than expected*. Smart virtualization projects can make applications more reliable, leverage existing networks and don't have to cost a fortune.

NETGEAR products can help you build solutions like:

- Primary shared storage platforms in small or remote offices
- Secondary storage for backup and replication in existing virtualization environments
- 10GB connectivity with managed or smart switches, stacked for reliability
- Securing physical and virtual machines from network threats
- Next Business Day Service and extended warranties covering all infrastructure components



*Tiffani Bova, Ingram Symposium presentation, November 2010

Cloud Computing

Cloud IT services revenue will quadruple by 2015, and the fastest adopters are small businesses.* Smart cloud projects deliver recurring channel partner revenue while cutting customer capital expenses without sacrificing performance or reliability.

NETGEAR products can help you build solutions like:

- Seamless file sharing in or out of the office (hybrid cloud file sharing)
- Offsite replication and disaster recovery services, billed monthly
- Secure connections to the Internet, regardless of provider or content



*Gartner, "Forecast: Public Cloud Services, Worldwide and Regions, Industry Sectors (2010-2015, 2011 update)"

Mobility

The mobile device revolution is here, and users are demanding access like never before. Our customers tell us that connectivity is the easy part but management is equally important and often overlooked. Smart mobility projects make connectivity and management reliable, affordable and simple.

NETGEAR products can help you build solutions like:

- Resilient wireless networks that can carry converged voice, video and data traffic
 - Stand-alone software, management appliances or wireless controller fabrics that scale with customer needs
 - Power-over-Ethernet (PoE) switches in multiple voltages for any device
 - Centralized management for access points, controllers and switches
 - Next Business Day Service and extended warranties covering all infrastructure components
-

Security

The Radicati group estimates as many as 80% of all websites are infected with malware. Threat vectors are exponentially greater than ever before, and many companies are unsure how to address them. Smart IT means stopping more threats, increasing productivity and staying on budget.

NETGEAR products can help you build solutions like:

- Defense-in-depth strategies to thoroughly layer protection throughout the network
- Single platforms that address multiple threats and simplify licensing
- Uncompromising protection rated by 3rd parties as the best available
- Affordable VPN Firewall options for small and remote locations
- Reliable cloud computing connections





CONTENTS

BUSINESS PRODUCTS

PROSAFE®

ProSafe Switches	5
NETGEAR 8800 Series Chassis Switches	8
NETGEAR Network Management System	8
Modules and Accessories for Switches	9
ProSafe Software	10
ProSafe Wireless Management Systems	11
ProSafe Access Points and Antennas	11

PROSECURE® & PROSAFE®

ProSecure® Web & Email Security	14
ProSafe VPN Firewalls	15

READYNAS® NETWORK STORAGE

17

SUPPORT AND MANAGEMENT

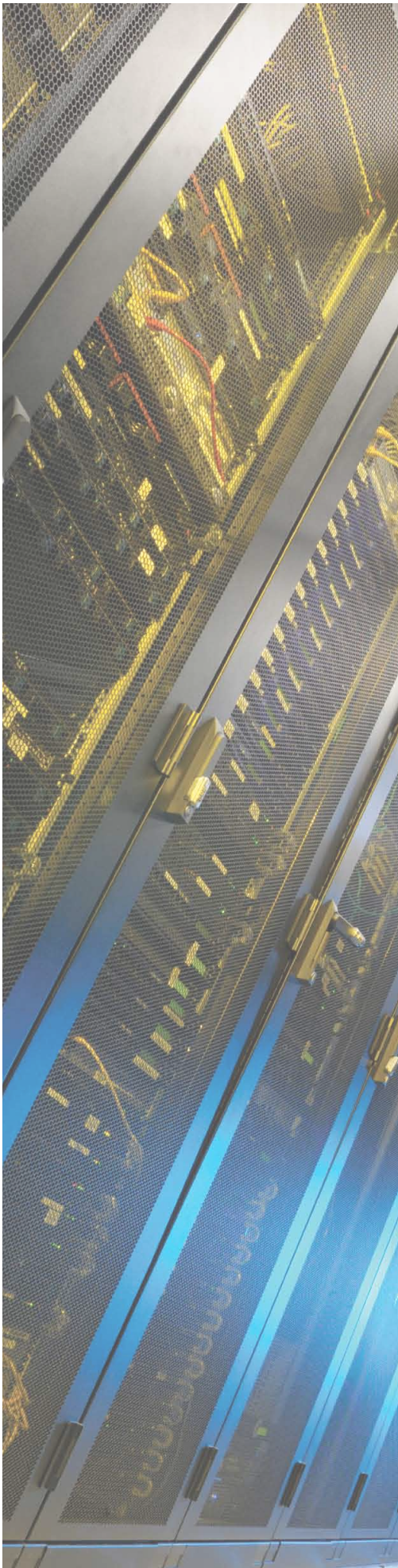
24

WARRANTIES

25

SOLUTIONS FOR BUSINESSES & DEPARTMENTS

26



ProSafe® Switches

NETGEAR offers a complete line of reliable, affordable networking switches. With a wide range of chassis and blade options, NETGEAR switches provide the right speed, size, and form factor to fit your needs – regardless of the size and complexity of your network. All ProSafe switches are standards based, fully compatible with existing 10/100/1000 network infrastructure, and deliver the performance, ease-of-use, and reliability you require. In addition, all ProSafe® switches carry a lifetime warranty.

ProSafe Managed Switches



10/100 Fast Ethernet

MANAGED		
L2		
10/100 FAST ETHERNET		
PORTS	MODEL	NAME
24 (Rackmount)	FSM726**	PROSAFE 24-PORT 10/100 L2 MANAGED RACKMOUNT SWITCH WITH 2 COMBO GIGABIT ETHERNET PORTS

10/100/1000 Gigabit

MANAGED		
L2+ WITH LITE L3 ROUTING		
10/100/1000 GIGABIT		
PORTS	MODEL	NAME
48 (Rackmount)	GSM7252PS**	PROSAFE 48-PORT STACKABLE GIGABIT POE L2+ MANAGED RACKMOUNT SWITCH WITH BUILT-IN 10 GIGABIT
48 (Rackmount)	GSM7248**	PROSAFE 48-PORT GIGABIT L2+ MANAGED RACKMOUNT SWITCH
24 (Rackmount)	GSM7228PS**	PROSAFE 24-PORT STACKABLE GIGABIT POE L2+ MANAGED RACKMOUNT SWITCH WITH BUILT-IN 10 GIGABIT
24 (Rackmount)	GSM7224**	PROSAFE 24-PORT GIGABIT L2+ MANAGED RACKMOUNT SWITCH
L3		
48 (Rackmount)	GSM7352S**	PROSAFE 48-PORT STACKABLE GIGABIT L3 MANAGED RACKMOUNT SWITCH WITH BUILT-IN 10 GIGABIT
24 (Rackmount)	GSM7328FS**	PROSAFE 24 SFP GIGABIT L3 MANAGED STACKABLE RACKMOUNT SWITCH
24 (Rackmount)	GSM7328S**	PROSAFE 24-PORT STACKABLE GIGABIT L3 MANAGED RACKMOUNT SWITCH WITH BUILT-IN 10 GIGABIT
License Upgrades	GSM7228PL-10000S GSM7252PL-10000S	L3 LICENSE UPGRADE FOR GSM7228PS L3 LICENSE UPGRADE FOR GSM7252PS

10 Gigabit

MANAGED		
L2+ WITH LITE L3 ROUTING		
10 GIGABIT		
PORTS	MODEL	NAME
24 (Rackmount)	XSM7224S**	PROSAFE 24-PORT 10 GIGABIT STACKABLE L2+ MANAGED RACKMOUNT SWITCH
License Upgrade	XSM7224L-10000S	L3 LICENSE UPGRADE FOR XSM7224S

**Next business day onsite replacement support. Advanced registration required. For a list of countries where service is available, and terms and conditions visit <http://onsite.netgear.com>.

ProSafe Smart Switches



10/100 Fast Ethernet

SMART MANAGED		
L2		
10/100 FAST ETHERNET		
PORTS	MODEL	NAME
48 (Rackmount)	FS752TP	PROSAFE 52-PORT 10/100 SMART RACKMOUNT SWITCH + 4 GIGABIT PORTS & 48 POE PORTS
48 (Rackmount)	FS752TS***	PROSAFE 48-PORT 10/100 STACKABLE SMART RACKMOUNT SWITCH + 4 GIGABIT PORTS
48 (Rackmount)	FS750T2	PROSAFE 48-PORT 10/100 SMART RACKMOUNT SWITCH + 2 GIGABIT PORTS
24 (Rackmount)	FS728TS***	PROSAFE 24-PORT 10/100 STACKABLE SMART RACKMOUNT SWITCH + 4 GIGABIT PORTS
24 (Rackmount)	FS728TP	PROSAFE 24-PORT 10/100 SMART RACKMOUNT SWITCH WITH 4 GIGABIT PORTS AND 24 POE PORTS
24 (Rackmount)	FS726TP	PROSAFE 24-PORT 10/100 SMART RACKMOUNT SWITCH WITH 2 GIGABIT PORTS AND 12 POE PORTS
24 (Rackmount)	FS726T	PROSAFE 24-PORT 10/100 SMART RACKMOUNT SWITCH WITH 2 GIGABIT PORTS

10/100/1000 Gigabit

SMART MANAGED		
L2		
10/100/1000 GIGABIT		
PORTS	MODEL	NAME
52 (Rackmount)	GS752TXS	PROSAFE 52-PORT GIGABIT STACKABLE SMART SWITCH WITH 4 10GE UPLINKS
48 (Rackmount)	GS748TPS	PROSAFE 48-PORT GIGABIT STACKABLE POE SMART RACKMOUNT SWITCH
48 (Rackmount)	GS748TS	PROSAFE 48-PORT GIGABIT STACKABLE SMART RACKMOUNT SWITCH
48 (Rackmount)	GS748TP	PROSAFE 48-PORT 10/100/1000 SMART POE RACKMOUNT SWITCH
48 (Rackmount)	GS748T	PROSAFE 48-PORT GIGABIT SMART RACKMOUNT SWITCH
24 (Rackmount)	GS724TPS	PROSAFE 24-PORT GIGABIT STACKABLE POE SMART RACKMOUNT SWITCH
24 (Rackmount)	GS724TS	PROSAFE 24-PORT GIGABIT STACKABLE SMART RACKMOUNT SWITCH
24 (Rackmount)	GS724TP	PROSAFE 24-PORT 10/100/1000 SMART POE RACKMOUNT SWITCH
24 (Rackmount)	GS724T	PROSAFE 24-PORT GIGABIT SMART RACKMOUNT SWITCH
16 (Rackmount)	GS716T	PROSAFE 16-PORT GIGABIT SMART RACKMOUNT SWITCH
8 (Desktop)	GS110TP	PROSAFE 8-PORT GIGABIT POE SMART DESKTOP SWITCH WITH 2 GIGABIT FIBER SFP
8 (Desktop)	GS108T	PROSAFE 8-PORT GIGABIT SMART DESKTOP SWITCH WITH POE-PD AS A POWER OPTION

***Only available in Asia and Europe

ProSafe Plus Switches



10/100 Fast Ethernet

PROSAFE PLUS		
L2		
10/100 FAST ETHERNET		
PORTS	MODEL	NAME
24 (Rackmount)	JFS524E	PROSAFE PLUS RACKMOUNT SWITCH, 24-PORT FAST ETHERNET
16 (Rackmount)	FS116E	PROSAFE PLUS RACKMOUNT SWITCH, 16-PORT FAST ETHERNET

10/100/1000 Gigabit

PROSAFE PLUS		
L2		
10/100/1000 GIGABIT		
PORTS	MODEL	NAME
5 (Desktop)	GS105E	PROSAFE PLUS DESKTOP SWITCH, 5-PORT GIGABIT ETHERNET
8 (Desktop)	GS108E	PROSAFE PLUS 8-PORT GIGABIT ETHERNET DESKTOP SWITCH
16 (Rackmount)	GS116E	PROSAFE PLUS 16-PORT GIGABIT ETHERNET RACKMOUNT SWITCH
24 (Rackmount)	JGS116E	PROSAFE PLUS 24-PORT GIGABIT ETHERNET RACKMOUNT SWITCH

ProSafe Plus with PoE

PORTS	MODEL	NAME
8 (Desktop)	GS108PE	PROSAFE PLUS 8-PORT GIGABIT ETHERNET DESKTOP SWITCH WITH 4 POE PORTS

ProSafe Unmanaged Switches



10/100 Fast Ethernet

UNMANAGED		
L2		
10/100 FAST ETHERNET		
PORTS	MODEL	NAME
24 (Rackmount)	JFS524	PROSAFE 24-PORT 10/100 MBPS FAST ETHERNET RACKMOUNT SWITCH
16 (Rackmount)	JFS516	PROSAFE 16-PORT 10/100 MBPS FAST ETHERNET RACKMOUNT SWITCH
16 (Desktop)	FS116	PROSAFE 16-PORT 10/100 DESKTOP SWITCH
8 (Desktop)	FS108	PROSAFE 8-PORT 10/100 DESKTOP SWITCH
5 (Desktop)	FS105	PROSAFE 5-PORT 10/100 DESKTOP SWITCH

10/100/1000 Gigabit

UNMANAGED		
L2		
10/100/1000 GIGABIT		
PORTS	MODEL	NAME
24 (+2 SFP) (Rackmount)	JGS524F	PROSAFE 24-PORT GIGABIT RACKMOUNT SWITCH WITH 2 SFP SLOTS
24 (Rackmount)	JGS524	PROSAFE 24-PORT GIGABIT RACKMOUNT ETHERNET SWITCH 10/100/1000
16 (Rackmount)	JGS516	PROSAFE 16-PORT GIGABIT RACKMOUNT ETHERNET SWITCH 10/100/1000 MBPS
16 (Desktop)	GS116	PROSAFE 16-PORT GIGABIT DESKTOP SWITCH
8 (Desktop)	GS108	PROSAFE 8-PORT GIGABIT ETHERNET DESKTOP SWITCH 10/100/1000 MBPS
5 (Desktop)	GS105	PROSAFE 5-PORT GIGABIT ETHERNET DESKTOP SWITCH

Unmanaged PoE

UNMANAGED		
L2		
UNMANAGED PoE		
PORTS	MODEL	NAME
16 10/100 (8 PoE) (Desktop)	FS116P	PROSAFE 16-PORT 10/100 DESKTOP SWITCH WITH 8-PORT POE
8 10/100 (4 PoE) (Desktop)	FS108P	PROSAFE 8-PORT 10/100 DESKTOP SWITCH WITH 4-PORT POE
8 10/100/1000 (4 PoE) (Desktop)	GS108P	PROSAFE 8-PORT 10/100/1000 GIGABIT DESKTOP SWITCH WITH 4-PORT POE

NETGEAR 8800 Series Chassis Switches



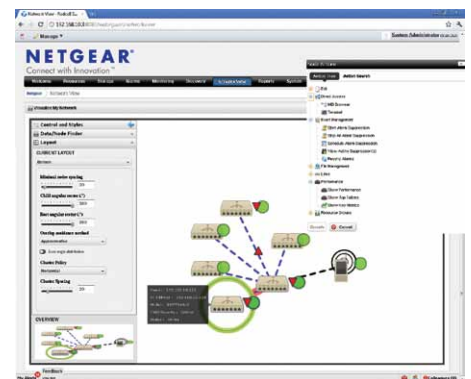
XCM8100

NETGEAR 8800 Series simplifies network infrastructures with purpose-built core, aggregation, and intelligent edge modules. XCM8800 takes a modular, self-healing approach to consolidating convergent networking services.

MANAGED L2, L3, L4	
MODEL	NAME
XCM8806	NETGEAR 8800 SERIES 6-SLOT CHASSIS SWITCH
XCM8810	NETGEAR 8800 SERIES 10-SLOT CHASSIS SWITCH
XCM8851	NETGEAR 8800 SERIES SUPERVISORY MODULE
XCM8848T	NETGEAR 8800 SERIES 48-PORT 10/100/1000BASE-T MODULE
XCM888P	NETGEAR 8800 SERIES POE DAUGHTER CARD FOR XCM8848T
XCM8824F	NETGEAR 8800 SERIES 24-PORT 1000BASE-X SFP MODULE
XCM8808X	NETGEAR 8800 SERIES 8-PORT 10GBASE-XP MODULE
XCM88P51	NETGEAR 8800 SERIES 100-240VAC POWER SUPPLY UNIT
XCM8806PC	NETGEAR 8800 SERIES POWER SUPPLY COVER FOR XCM8806
XCM8810PC	NETGEAR 8800 SERIES POWER SUPPLY COVER FOR XCM8810
XCM8806FT	NETGEAR 8800 SERIES SPARE FAN TRAY UNIT FOR XCM8806
XCM8810FT	NETGEAR 8800 SERIES SPARE FAN TRAY UNIT FOR XCM8810
XCM88FPB	NETGEAR 8800 SERIES SPARE FAN/PSU CONTROLLER UNIT
XCM888F	NETGEAR 8800 SERIES 8-PORT 1000BASE-X SFP CARD FOR XSM8851
XCM88ASL	NETGEAR 8800 SERIES ADVANCED CORE SOFTWARE LICENSE UPGRADE

Network Management


The NETGEAR Network Management System NMS200 allows for smarter management of NETGEAR infrastructures. By normalizing how the infrastructure is discovered, configured and monitored, administrators can save time, reduce errors, and increase operational efficiency.



SKU	LICENSE DESCRIPTION
NMS215-100005	NETGEAR MANAGEMENT SYSTEM NMS200 15-DEVICE PACK LICENSE
NMS230-100005	NETGEAR MANAGEMENT SYSTEM NMS200 30-DEVICE PACK LICENSE
NMS250-100005	NETGEAR MANAGEMENT SYSTEM NMS200 50-DEVICE PACK LICENSE
NMS2100-100005	NETGEAR MANAGEMENT SYSTEM NMS200 100-DEVICE PACK LICENSE
NMS2500-100005	NETGEAR MANAGEMENT SYSTEM NMS200 500-DEVICE PACK LICENSE

Modules and Accessories for Switches


For use with ProSafe managed switches



Gigabit Fiber Modules
Unmanaged / Smart / L2 And L3 Managed

MODEL	AGM731F	AGM732F	AGM734	AFM735
Product Description	ProSafe® Fiber 1000BASE-SX SFP Module	ProSafe® Fiber 1000BASE-LX SFP Module	ProSafe® RJ45 1000BASE-T SFP Module	ProSafe® Fiber 100BASE-FX SFP Module
Distance	Up to 550m	Up to 10km	Up to 100m	Up to 2km
Cabling Type	IEEE 802.3z 1000BASE-SX	IEEE 802.3z 1000BASE-LX	1000BASE-T	IEEE 802.3-2002 100BASE-FX
Connector	One LC Fiber connection	One LC Fiber connection	RJ45	One LC Fiber connection
Interface (Bus) Type	Small Form Factor Pluggable (SFP)	Small Form Factor Pluggable (SFP)	Small Form Factor Pluggable (SFP)	Small Form Factor Pluggable (SFP)
Form Factor	Plug-in module	Plug-in module	Plug-in module	Plug-in module
Data Transfer Rate	1 Gbps	1 Gbps	1 Gbps	100 Mbps
Hot-Swappable	•	•	•	•
Fiber Cable Support	Supports both 62.5 µm OM1 and 50 µm OM3 multimode Fiber cabling	Supports 9 µm single mode Fiber cabling	Copper CAT5E or better	Supports both 62.5 µm OM1 and 50 µm OM3 multimode Fiber cabling
Switch Compatibility	All Smart & Managed Switches, plus JGS524F	All Smart & Managed Switches, plus JGS524F	GSM7328FS, XSM7224S, XCM8800	Managed Switches and XCM8800
Warranty	5 Year	5 Year	5 Year	5 Year

10Gigabit Copper And Fiber Modules
Layer 2 And Layer 3 Managed
Gsm72xxps/Gsm73xxs



MODEL	AX742	AX743	AX744	AXM761	AXM762	AXM763	AXC761	AXC763	AXC753	AXM751	AXM752
Product Description	ProSafe® 24 Gigabit Stacking Kit [two modules and a stacking cable]	ProSafe® 10 Gigabit Ethernet SFP+ Adapter	ProSafe® 10 Gigabit Ethernet CX4 Module	ProSafe® 10GBASE-SR "Short Reach" SFP+ Module	ProSafe® 10GBASE-LR "Long Reach" SFP+ Module	ProSafe® 10GBASE-LRM "Long Reach Multimode" SFP+ Module	ProSafe® 1m Direct Attach SFP+ Cable	ProSafe® 3m Direct Attach SFP+ Cable	ProSafe® 3m Direct Attach SFP+ to XFP Cable	ProSafe® 10GBASE-SR "Short Reach" XFP Module	ProSafe® 10GBASE-LR "Long Reach" XFP Module
Distance	N/A	N/A	Up to 15m	Up to 300m	Up to 10km	Up to 220m	1m	3m	3m	Up to 300m	Up to 10km
Cabling Type	High-speed Stacking Cable			10GBASE-SR "Short Reach"	10GBASE-LR "Long Reach"	10GBASE-LRM Long Reach Multimode	Direct Attach 10GSFP+Cu	Direct Attach 10GSFP+Cu	Direct Attach 10GSFP+Cu	10GBASE-SR "Short Reach"	10GBASE-LR "Long Reach"
Connector	One Stacking Interface slot	One SFP+ Interface slot	One CX4 connection	One LC Fiber connection	One LC Fiber connection	One LC Fiber connection	SFP+ connectors	SFP+ connectors	SFP+ to XFP	One LC Fiber connection	One LC Fiber connection
Interface (Bus) Type	24 Gigabit High-speed Stacking	10 Gigabit Small Form Factor Pluggable (SFP+)	10 Gigabit Infiniband (CX4)	10 Gigabit Small Form Factor Pluggable (SFP+)	10 Gigabit Small Form Factor Pluggable (SFP+)	10 Gigabit Small Form Factor Pluggable (SFP+)	10 Gigabit Small Form Factor Pluggable (SFP+)	10 Gigabit Small Form Factor Pluggable (SFP+)	10 Gigabit Small Form Factor Pluggable (SFP+)	10 Gigabit Small Form Factor Pluggable (XFP)	10 Gigabit Small Form Factor Pluggable (XFP)
Form Factor	Plug-in module	Plug-in module	Plug-in module	Plug-in SFP+	Plug-in SFP+	Plug-in SFP+	SFP+ Cable	SFP+ Cable	SFP+ / XFP Cable	Plug-in XFP	Plug-in XFP
Data Transfer Rate	12 Gbps Full-duplex (24 Gbps)	10 Gbps	10 Gbps	10 Gbps	10 Gbps	10 Gbps	10 Gbps	10 Gbps	10 Gbps	10 Gbps	10 Gbps
Hot-Swappable	•	•	•	•	•	•	•	•	•	•	•
Fiber Cable Support	NA	NA	NA	50µm OM3 multimode fiber cables (300m) or legacy 62.5µm OM1 multimode (33m)	Supports 9µm single mode Fiber cabling	Supports legacy 62.5 µm OM1 multimode Fiber cabling (220m)	NA	NA	NA	50µm OM3 multimode fiber cables (300m)	Supports 9µm single mode Fiber cabling
Switch Compatibility	GSM72xxPS GSM73xxS XSM7224S	GSM72xxPS GSM73xxS XSM7224S	GSM72xxPS GSM73xxS XSM7224S	GS752TXS GSM72xxPS GSM73xxS XSM7224S	GS752TXS GSM72xxPS GSM73xxS XSM7224S	GS752TXS GSM72xxPS GSM73xxS XSM7224S	GS752TXS GSM72xxPS GSM73xxS XSM7224S XCM8800	GS752TXS GSM72xxPS GSM73xxS XSM7224S XCM8800	GS752TXS GSM72xxPS GSM73xxS XSM7224S XCM8800	XCM8800	XCM8800
Warranty	5 Year	5 Year	5 Year	5 Year	5 Year	5 Year	5 Year	5 Year	5 Year	5 Year	5 Year

Modular Power Supply
Layer 2 And Layer 3 Managed Switches



MODEL	APS525W	APS135W	RP55412	AFT200	APS300W	XCM88PS1
Product Description	ProSafe Auxiliary Power Supply	ProSafe Auxiliary Power Supply	External Redundant Power Supply	ProSafe Auxiliary Fan Tray	ProSafe Auxiliary Power Supply	XCM8800 Power Supply
Hot-Swappable	When used with an RPS	When used with an RPS	Yes	Yes	Yes	Yes
Switch Compatibility	GSM72xxPS	GSM73xxSv2	GSM72xx GSM72xxPS GSM73xxSv1/v2	XSM7224S	XSM7224S	XCM8800 Series
Warranty	5 Year	5 Year	5 Year	5 Year	5 Year	3 Year

ProSafe Wireless Management Systems

Wireless connectivity has become a business necessity, as employees use an increasing number of laptops, tablets, smartphones, and other mobile devices to access the network from throughout the office. Wireless network connectivity can be achieved quickly and easily by adding NETGEAR ProSafe Wireless Access Points wherever wireless access is desired.

Using a NETGEAR ProSafe Wireless Management System, all wireless access points throughout the network are automatically discovered, and can be centrally configured and managed, thereby simplifying the effort required to implement, configure, and manage the wireless network. All access points on the network can mimic the setup process of a single access point – for easy, rapid, centralized management.








		 Wireless Management Software	 Wireless Management System	 ProSafe Wireless Controller
MODEL		WMS105	WMS5316	WC7520
Central Configuration	Product Description	ProSafe® Wireless Management Software	ProSafe® Wireless Management System	ProSafe® Wireless Controller
	Wireless Support	IEEE 802.11a, IEEE 802.11g, IEEE 802.11n	IEEE 802.11a, IEEE 802.11g, IEEE 802.11n	IEEE 802.11a, IEEE 802.11g, IEEE 802.11n
	Ports	–	4 x 10/100/1000	4 x 10/100/1000
	Nb Of Access Points / System	5	16	20 (Up to 50 with 10-AP incremental license upgrades)
	Total Nb Of Access Points (Stack)	5	16	150 with 3 Controllers
	Access Points Supported	WNDAP350, WNDAP330, WNAP210, WG302, WG103, WN802T, WG602	WNDAP350, WNAP320, WNDAP360, WNAP210, WG103	WNDAP350, WNAP210, WNAP320, WNDAP360 (Standard Access Points)
	Access Points Discovery	All supported Access Points in the same subnet	All supported Access Points in the network (L2, L3, VLAN)	All supported Access Points in the network (L2, L3, VLAN)
	Access Points Configuration	Basic initial central configuration	Central configuration	Central configuration
	Survivability	AP retain their standalone capabilities, Wireless network still up should the WMS105 shut down	AP retain their standalone capabilities, Wireless network still up should the WMS5316 shut down	N+1 redundancy
Advanced Wireless	Security	802.11i, ACLs (802.1x with ProSafe Access Points)	802.11i, ACLs (802.1x with ProSafe Access Points)	802.11i, ACLs, 802.1x
	Nb Of Security Profiles Groups		8	8
	Rogue Ap Detection		•	•
	Multi-Ssid		With ProSafe Access Points only	•
	Vlans		With ProSafe Access Points only	•
	Guest Access / Captive Portal		With ProSafe Access Points only	•
	Rf Management		Channels and RF parameters automatic assignment	Complete Self Healing coverage and RF management
	Wireless Monitoring		Basic Monitoring	Complete Monitoring
	Enterprise Controller	Heat Maps / Triangulation		
Building Floors Plan Input				•
Voip Quality Of Service				•
Aps Load Balancing				•
L2/L3 Fast Roaming Support				•
Stacking Capability				3 Controllers
Rate Limiting Per Bssid				•
Management		Software running on a PC (Windows XP, Vista, Seven), only needed for initial Wireless central configuration	Web-based	Web-based
Snmp			v1, v2, v3	v1, v2, v3
Physical Dimensions			330 x 430 x 209 mm Weight: 2.1 kg	440 x 253 x 43.2 mm Weight: 4.5 kg
In The Box		Resource CD	Power cord, Resource CD, Rack-mount kit, Warranty/support information card	Power cord, Resource CD, Rack-mount kit, Warranty/support information card
Warranty		1 Year (Media)	Lifetime	Lifetime. Onsite Replacement (3 Years) Included**
Prosupport Maintenance Pkgs - Oncall 24x7 - Xpresshw			PMB0332 PRR0332	PMB0333 PRR0333

**Next business day onsite replacement support. Advanced registration required. For a list of countries where service is available, and terms and conditions visit <http://onsite.netgear.com>.

ProSafe Access Points

Wireless Access Points

NETGEAR Wireless Access Points are ideal for extending an existing Ethernet network to areas that cabling cannot reach, or to provide easier connectivity for employees, visitors, or a mobile workforce.

							
MODEL	WNDAP360 NEW	WNDAP350	WNAP320	WNAP210	WG302	WG103	WAG102
Product Description	ProSafe® Dual Band Wireless-N Access Point	ProSafe® Dual Band Wireless-N Access Point	ProSafe® Wireless-N Access Point	ProSafe® Wireless-N Access Point	ProSafe® 802.11g Wireless Access Point	ProSafe® 802.11g Wireless Access Point	ProSafe® 802.11a/g Dual Band Wireless Access Point
Wireless Support	IEEE 11a/b/g/n	IEEE 802.11a/b/g/n	IEEE 802.11b/g/n	IEEE 802.11a/b/g/n	IEEE 802.11g	IEEE 802.11g	IEEE 802.11a, IEEE 802.11g
Maximum Throughput		300 Mbps	300 Mbps	300 Mbps	108 Mbps	108 Mbps	108 Mbps on both bands
Frequency Rate	2.4 GHz and 5.0 GHz	2.4 GHz and 5.0 GHz	2.4 GHz	2.4 GHz	2.4 GHz	2.4 GHz	2.4 GHz and 5.0 GHz
Ports		(1) 10/100/1000 Mbps Port	(1) 10/100/1000 Mbps Port	(1) 10/100/1000 Mbps Port	(1) 10/100 Mbps Port	(1) 10/100 Mbps Port	(1) 10/100 Mbps Port
802.3AF Poe Support	•	•	•	•	•	•	•
Poe Consumption	10.51 W	12.7 W	5.8W	5.8 W	6 W	5 W	8.5 W
Antenna	Two (2) Internal 5 Dbi Two (2) reverse SMA antenna connectors	Two (2) reverse SMA antenna connectors	Two (2) reverse SMA antenna connectors	Internal 2.4 GHz Antennas	Two (2) 5 dBi detachable (2.4 GHz)	One (1) 5 dBi detachable (2.4 GHz)	Two (2) 5 dBi detachable antennas (2.4 GHz and 5.0 GHz)
Reverse Sma Antenna Connectors	2	2	2	none	2	1	2
Accepts Accessory Antennas	•	•	•	no	•	•	•
WDS Wireless Distribution System	<ul style="list-style-type: none"> Bridge mode: Point-to-point wireless WDS mode Bridge mode: Point-to-multipoint wireless WDS mode Repeater mode Adjustable Transmit Power Control (TPC) from 100 mW down to 0 mW 	<ul style="list-style-type: none"> Repeater Point-to-point/multi-point Simultaneous bridge & wireless client association 	<ul style="list-style-type: none"> Repeater Point-to-point/multi-point Simultaneous bridge & wireless client association 	<ul style="list-style-type: none"> Repeater Point-to-point/multi-point Simultaneous bridge & wireless client association Client Mode 	<ul style="list-style-type: none"> Repeater Point-to-point/multi-point Simultaneous bridge & wireless client association 	<ul style="list-style-type: none"> Repeater Point-to-point/multi-point Simultaneous bridge & wireless client association 	<ul style="list-style-type: none"> Repeater Point-to-point/multi-point Simultaneous bridge & wireless client association
SSID	8	8	8	8	8	8	16 (8 per Radio)
User Support	Up to 50 users	Up to 64 users	Up to 32 users	Up to 32 users	Up to 64 users	Up to 32 users	Up to 32 users
WPA/WPA2 – Enterprise, 802.11i	•	•	•	•	•	•	•
VPN Pass-Through	•	•	•	•	•	•	•
Mac® Address Filtering	Up to 256 users	Up to 256 users	Up to 256 users	Up to 256 users	Up to 256 users	Up to 256 users	Up to 256 users
802.1X Radius	•	•	•	•	•	•	•
Block SSID Broadcast	•	•	•	•	•	•	•
Peer To Peer Blocking	•	•	•	•	•	•	•
Secure Socket Layer (SSL) Remote Management Login	•	•	•	•	•	•	•
Secure Ssh Telnet	•	•	•	•	•	•	•
SSL / Secure Ssh	•	•	•	•	•	•	•
Client Isolation	•	•	•	•	•	•	•
QOS	WMM	WMM	WMM	WMM	SpectraLink Support for Voice Priority	WMM	WMM
Client Power Save	WMMPS	WMMPS	WMMPS	WMMPS		WMM-PS	
Rogue AP Detection	•	•	•	•	•	•	•
Wireless Management	ProSafe® WC7520; WMS5316; WMS105				ProSafe® NMS100; WMS5316; WMS105		
Network Management	SNMP MIB I, MIB II, 802.11 MIB and Proprietary Configuration MIB	SNMP v1, v2c: MIB I, MIB II, 802.11 MIB, and Proprietary Configuration MIBs	SNMP v1, v2c: MIB I, MIB II, 802.11 MIB, and Proprietary Configuration MIBs	SNMP v1, v2c: MIB I, MIB II, 802.11 MIB, and Proprietary Configuration MIBs	SNMP v1, v2c: MIB I, MIB II, 802.11 MIB, and Proprietary Configuration MIBs	SNMP v1, v2c: MIB I, MIB II, 802.11 MIB, and Proprietary Configuration MIBs	SNMP v1, v2c: MIB I, MIB II, 802.11 MIB, and Proprietary MIBs
User Interface	ProSafe® Control Center GUI	ProSafe® Control Center GUI	ProSafe® Control Center GUI	ProSafe® Control Center GUI	Browser-based interface	ProSafe® Control Center GUI	Browser-based interface
Remote Configuration	Web browser, SNMP or Telnet with command line interface (CLI)	Web browser, SNMP or Telnet with command line interface (CLI) / FTP with product line	Web browser, SNMP or Telnet with command line interface (CLI) / FTP with product line	Web browser, SNMP or Telnet with command line interface (CLI) / FTP with product line	Web browser, SNMP or Telnet with command line interface (CLI) / FTP with product line	Web browser, SNMP or Telnet with command line interface (CLI) / FTP with product line	Web browser or SNMP
Physical Dimensions (W X D X H)	253.75 x 253.76 x 54.76 mm (10.0 x 10.0 x 2.16 in)	32 x 190 x 124 mm (1.25 x 7.5 x 4.9 in)	55 x 254 x 254 mm (2.15 x 10 x 10 in)	28 x 153.2 x 223.5 mm (1.1 x 6.0 x 8.8 in)	254 x 178 x 31.8 mm (10 x 7 x 1.25 in)	157 x 99 x 25 mm (6.2 x 3.9 x 1 in)	190.5 x 122 x 32 mm (7.5 x 4.8 x 1.25 in)
Weight	1.93 lbs (0.878 kg)	1.2 lb (0.56 kg)	1.95 lb (0.89 kg)	.9 lb (0.41 kg)	1.27 lbs (0.57 kg)	0.88 lb (0.40 kg)	1.38 lb (0.62 kg)
In The Box	Resource CD, Power Adapter, Ethernet cable, Wall Mounting Kit, Installation guide, Warranty/support information card	Resource CD, Power Adapter, Ethernet cable, Wall Mounting Kit	Resource CD, Power Adapter, Ethernet cable, Wall Mounting Kit	Resource CD, Power Adapter	Two (2) Detachable Antennas, Resource CD, Power Adapter, Ethernet cable, Wall Mounting Kit	One (1) Detachable Antenna, Resource CD, Power Adapter, Ethernet cable, Wall Mounting Kit	Two (2) Detachable Antennas, Resource CD, Power Adapter, Ethernet cable
Certifications	WiFi Certified						
Plenum-Rated	•	•	•	•	•	•	•
Warranty	Hardware: Lifetime, Power Supply: 3 Year						
ProSupport Maintenance Pkgs - Oncall 24X7				PMB0331 PRR0331			

ProSafe Access Points and Antennas

ProSafe Antennas

ProSafe antennas can be used in conjunction with Wireless Access Points to boost wireless signals across a building or campus.



MODEL	ANT224D10	ANT32405	ANT24D18	ANT2409	ANT2407	ANT2405
Product Description	ProSafe® 2x2 Outdoor 10 dBi Directional Antenna	ProSafe® 3x3 Indoor 5 dBi Omni-directional Antenna with Integrated Cable	ProSafe® Indoor/Outdoor 14 dBi Patch Panel Directional Antenna	ProSafe® Indoor/Outdoor 9 dBi Omni-directional Antenna	ProSafe® Indoor 7 dBi Omni-directional Antenna with Integrated Cable	ProSafe® Indoor 5 dBi Omni-directional Antenna
Customer Needs	Indoor/outdoor long range point-to-point connections, such as connecting 2 buildings, 2 LANs together	Optimally place antenna to maximize coverage and keep the AP hidden (in the switch closet or above a ceiling)	Indoor/outdoor long range point-to-point connections, such as connecting 2 buildings, 2 LANs together	Indoor/Outdoor medium-range applications. Perfect for building rooftops.	Optimally place antenna to maximize coverage and keep the AP hidden (in the switch closet or above a ceiling)	Optimally place antenna to maximize coverage and keep the AP hidden (in the switch closet or above a ceiling)
Frequency	2.4 GHz					
Max. Outdoor Range	10.4 km (6.7 miles)***	n/a	21.4 km (13.3 miles)*	11.5 km (7.2 miles) **	n/a	n/a
Polarisation	Linear; Vertical	Vertical	Vertical	Vertical	Vertical	Vertical
Gain	10 dBi	5 dBi	14 dBi	9 dBi	7 dBi	5 dBi
Warranty	2 Year					

*Range estimation is based on FCC-compliant operation of two (2) 802.11 APs each with two (2) ANT24D18 antennas placed at 90 degree rotation, 5 m antenna cables, and lightning arrestors installed. With the antennas positioned 36 m above the ground, data rate should sustain 1 Mbps under ideal line-of-sight conditions

**Range estimation is based on FCC-compliant operation of two (2) 802.11 APs each with two (2) ANT2409 antennas, 1 m antenna cables, and lightning arrestors installed. With the antennas positioned 27 m above the ground, data rate should sustain 1 Mbps under ideal line-of-sight conditions.

***Range estimation is based on FCC-compliant operation of two (2) 802.11 APs with two (2) ANT224D10 antennas, 5 m antenna cables, and lightning arrestors installed. With the antennas positioned 26 m above the ground, data rate should sustain 1 Mbps under ideal line-of-sight conditions

Comprehensive Network Security for Your Business

Most network security products for small to mid-size businesses compromise on coverage, speed, or both. NETGEAR ProSecure and ProSafe Security products provide best-of-breed security—without compromise.

ProSecure – Enterprise Class Security for Business Networks



NETGEAR ProSecure gateway security appliances employ a best-of-breed security architecture to deliver up to 400 times more virus and malware coverage than competing products—at speeds up to five times faster, using patent-pending Stream Scanning technology. ProSecure gateway security appliances provide the ideal security solution for small and mid-size businesses.

- **Web Security** Enterprise-class security architecture to protect business networks from viruses, worms, spyware, trojans, rootkits, keyloggers, and unauthorized Web surfing — without impacting productivity.
- **Network Security** Firewall functionality that deploys an array of network security technologies such as stateful packet inspection (SPI), Intrusion prevention (IPS), and denial-of-service (DoS) protection.
- **Email Security** A Distributed Spam Analysis architecture that uses an in-the-cloud approach to stop up-to-the-minute spam outbreaks. Patent-pending Stream Scanning architecture ensures email is malware free.

With ProSecure gateway security appliances there's no per-user licensing, so web and email subscriptions are simple to manage. Each provides comprehensive protection for an unlimited number of users. A global network of partners ensures optimal appliance selection and responsive support.

ProSecure is the ideal security solution for small and mid-size businesses, offering enterprise-class network security that is easy to administer — with no per-user licensing, and no complicated or confusing subscription options.

"Initial setup and configuration for this device (STM600) was quite simple and straightforward. Once the appliance was connected to the network, we were able to access the web-based interface and run a setup wizard to configure the device for our environment."

–Peter Stephenson, SC Magazine

www.prosecure.netgear.com



ProSafe VPN Firewalls – Value for the SMB



NETGEAR ProSafe VPN Firewall Routers provide secure remote network access to help keep your business safe from network attacks and unauthorized access. ProSafe Security VPN Firewall Routers deliver full network access between headquarter locations, remote/branch offices and telecommuters, while ProSafe Security wireless VPN Firewall Routers are ideal for remote/branch offices and telecommuters. All models have all-inclusive business-class security built-in.

ProSafe Security solutions provide the ideal solution for secure, remote access for small and mid-size businesses.

ProSecure STM

Enterprise Strength Spam, Virus, & Web Filter Security

NETGEAR ProSecure STM Web and Email Threat Management Appliances provide comprehensive content security for your business.



MODEL	STM150	STM300	STM600
SIZING GUIDELINES			
Customer Type	Small Networks	Medium-sized Networks	Medium-sized Networks
HTTP Throughput (Mb/s)	42	163	260
SMTP Throughput (emails/hour)	139,000	420,000	960,000
CONTENT SECURITY			
Web (HTTP, HTTPS, FTP)	•	•	•
Email (SMTP, POP3, IMAP)	•	•	•
Stream Scanning	•	•	•
Inbound and Outbound Inspection	•	•	•
Signature-Less Zero Hour Protection	•	•	•
Malware Signatures	3 Million	3 Million	3 Million
Automatic Signature Updates	Hourly	Hourly	Hourly
Distributed Spam Analysis	•	•	•
Email Quarantine	•	•	•
Anti-spam Real-time Blacklist (RBL)	•	•	•
True HTTPS Scanning and Filtering	•	•	•
Distributed Web Analysis URL Filtering w/64 Categories	•	•	•
Application Control (IM, P2P, Streaming Media, Toolbar)	•	•	•
Number of Users	Unlimited	Unlimited	Unlimited
DEPLOYMENT			
Inline Transparent Bridge	•	•	•
VLAN Support	•	•	•
Administrative VLAN	•	•	•
HARDWARE			
Total Gigabit RJ45 Ports	5	3	5
Gigabit RJ45 Ports with Failure Bypass	0	2	4
Dedicated Management VLAN Ports RJ45	0	1	1
Administration Console Port	RS232	RS232	RS232
Form Factor	1U	1U	1U
Dimensions (H x L x W) mm	43.5 x 258 x 440	44.4 x 500 x 426	44.4 x 500 x 426
Weight kg	3.68	8.2	8.2
WARRANTY			
	2 Years		

ProSecure UTM Firewall

All-in-One Gateway Security Appliance

NETGEAR ProSecure UTM Unified Threat Management Appliance provides comprehensive all-in-one gateway security – without compromise.



MODEL	UTM5	UTM10	UTM25	UTM50	UTM150	UTM9S
SIZING GUIDELINES						
Average Anti-virus Throughput	15Mbps	20Mbps	25Mbps	45Mbps	130Mbps	21Mbps
Stateful Packet Inspection Firewall Throughput	90Mbps	90Mbps	127Mbps	400Mbps	900Mbps	130Mbps
Maximum VPN Throughput	40Mbps	50Mbps	90Mbps	200Mbps	700Mbps	50Mbps
Maximum Concurrent Connections	8000	12000	27000	40000	65000	16000
VLANs	255	255	255	255	255	255
CONTENT SECURITY						
Web and Email Scanned Protocols	HTTP,HTTPS,FTP,SMTP,IMAP,POP3					
Stream Scanning	•	•	•	•	•	•
Inbound and Outbound Inspection	•	•	•	•	•	•
Signature-Less Zero Hour Protection	•	•	•	•	•	•
Malware Signature	1.2 Million	1.2 Million	1.2 Million	1.2 Million	1.2 Million	1.2 Million
Automatic Signature Updates	Hourly	Hourly	Hourly	Hourly	Hourly	Hourly
Distributed Spam Analysis	•	•	•	•	•	•
Anti-spam Real-time Blacklist (RBL)	•	•	•	•	•	•
Distributed Web Analysis URL Filtering w/64 Categories	•	•	•	•	•	•
Application Control (IM & P2P)	•	•	•	•	•	•
Number of Users	Unlimited	Unlimited	Unlimited	Unlimited	Unlimited	Unlimited
FIREWALL FEATURES						
Stateful Packet Inspection (SPI)	Port/Service Blocking, Denial-of-service (DoS) Prevention, Stealth Mode, Block TCP Flood, Block UDP Flood, WAN/LAN Ping Response Control					
Intrusion Detection & Prevention	•	•	•	•	•	•
WAN Modes	NAT, Classical Routing					
ISP Address Assignment	DHCP, Static IP Assignment, PPPoE, PPTP					
NAT Modes	1-1 NAT, PAT					
Routing	Static, Dynamic, RIPv1, RIPv2					
DDNS	DynDNS.org, TZO.com, Oray.net					
Firewall Functions	Port Range Forwarding, Port Triggering, DNS proxy, MAC Address Cloning/spoofing, Network Time Protocol NTP Support, Diagnostic Tools (ping, DNS lookup, trace route, other), Auto-Uplink on Switch Ports, L3 Quality of Service (QoS), LAN-to-WAN and WAN-to-LAN (ToS)					
DHCP	DHCP Server, DHCP Relay					
User Authentication	Active Directory, LDAP, Radius, Local User Database					
Security Policies Based on Active Directory with Single Sign-On (SSO)	•	•	•	•	•	•
VPN						
VPN Protocols	SSL, IPsec					
Site to Site VPN Tunnels	5	10	25	50	150	10
SSL VPN for Remote Access	2	5	13	25	75	5
DEPLOYMENT						
Dual-WAN Fail-over			Dual	Dual	Dual	Triple
Intelligent Traffic Load Balancing			•	•	•	•
LOGGING AND MANAGEMENT						
Management	HTTP/HTTPS, SNMP v2c					
Log Delivery	Management GUI Query, Email Delivery, Syslog					
HARDWARE						
WAN Gigabit RJ45 Ports	1	1	2	2	4	2
LAN Gigabit RJ45 Ports	4	4	4	6	4	4
DMZ Port (Configurable)	1	1	1	1	1	1
Dimensions (W x H x D)	330 x 430 x 209mm	330 x 430 x 209mm	330 x 430 x 209mm	440 x 430 x 261mm	44 x 4.3 x 25.3cm	330 x 430 x 286mm
Weight kg	2.1	2.1	2.1	2.9	2.9	2.56
WARRANTY						
LIFETIME	LIFETIME	LIFETIME	LIFETIME	LIFETIME	LIFETIME	LIFETIME

ProSafe VPN Firewalls

An excellent choice of wired VPN Firewalls

NETGEAR ProSafe VPN (Virtual Private Network) Firewalls ensure maximum privacy and security with high-level encryption.

MODEL	SRX5308	FVS336G	FVS338	FVS318G	FVS318
Product Description	ProSafe® Quad WAN Gigabit Firewall with SSL & IPsec VPN	ProSafe® Dual WAN Gigabit Firewall with SSL & IPsec VPN	ProSafe® VPN Firewall with 8 Port 10/100 Mbps Switch & Dial Back-up	ProSafe® VPN Firewall with 8 Port 10/100 Mbps Switch	ProSafe® VPN Firewall with 8 Port 10/100 Mbps Switch
Firewall	DoS/SPI Firewall	DoS/SPI Firewall	DoS/SPI Firewall	DoS/SPI Firewall	DoS/SPI Firewall
Router	Ethernet NAT Router	Ethernet NAT Router	Ethernet NAT Router	Ethernet NAT Router	Ethernet NAT Router
Dedicated VPN Tunnels	125 (IPsec) / 50 (SSL)	25 (IPsec) / 10 (SSL)	50	5	8
Switch Ports & Interfaces	(4) 10/100/1000 Mbps LAN (4) 10/100/1000 Mbps WAN (1) Serial Port	(4) 10/100/1000 Mbps LAN (2) 10/100/1000 Mbps WAN	(8) 10/100 Mbps LAN (1) 10/100 Mbps WAN (1) Serial Port	(8) 10/100/1000 Mbps LAN (1) 10/100/1000 Mbps WAN	(8) 10/100 Mbps LAN (1) 10/100 Mbps WAN
WAN Failover	•	•	•		
DMZ Port	•	SW Port Forwarding	SW Port Forwarding	•	SW Port Forwarding
Memory (Flash/DRAM)	64/512MB	16/64MB	16/32MB	8/32MB	2/16MB
3DES Throughput	180 Mbps	16 Mbps	19 Mbps	7 Mbps	
Concurrent Connections	200,000	10,000	10,000	6,000	
LAN-To-WAN Throughput	924 Mbps	60 Mbps	75 Mbps	25 Mbps	11.5 Mbps
WAN Load Balancing	•	•			
In The Box	Ethernet Cable, Power Cable, Rack-mount Kit, Rubber Feet, Installation Guide, Warranty/Support Information Card, Resource CD With Single User ProSafe VPN Client Software License	Ethernet cable, Rackmount kit (FVS338 only), Installation guide, Resource CD with software, Warranty/Support Information	Power adapter, Ethernet cable, Installation guide, Resource CD, Warranty/Support Information		
Warranty	Lifetime	Hardware: Lifetime Power Supply: 3 Year	Hardware: Lifetime Power Supply: 3 Year	Lifetime	Lifetime
ProSupport Maintenance Pkgs - Oncall 24X7 - XPRESSHW	PMB0331 PRR0331	PMB0331 PRR0331	PMB0331 PRR0331	PMB0331 PRR0331	PMB0331 PRR0331



MODEL	FVS318N
Product Description	ProSafe® Wireless-N 8-port Gigabit VPN Firewall
Firewall	DoS/SPI Firewall
Router	Ethernet NAT Router
Dedicated VPN Tunnels	5 IPSEC 2 SSL
Switch Ports & Interfaces	(8) 10/100/1000 LAN (1) 10/100/1000 WAN
WAN Failover	
DMZ Port	•
Memory (Flash/DRAM)	32MB
3DES Throughput	
Concurrent Connections	6000
LAN-To-WAN Throughput	95 Mbps
WAN Load Balancing	
In The Box	Ethernet Cable, Power Adapter, Install Guide, Resource CD
Warranty	Firewall: NETGEAR Lifetime Warranty Power Supply: NETGEAR 3-Year Warranty
ProSupport - Oncall 24X7 - XPRESSHW	PMB0331 PRR0331

MODEL	VPN CLIENT PROFESSIONAL SOFTWARE VPNG01L / VPNG05L
Product Description	ProSafe® VPN Client Professional Software, available in Single and Five User License
Features	Robust encryption and authentication NAT traversal support GUI for configuring security policies and managing certificates Redundant gateway capability Extensive interoperability with IPsec-compliant devices Preset configuration files available for NETGEAR® VPN/Firewall routers
NETGEAR®-Compatible Devices	Compatible with multiple Microsoft® Windows® platforms including Windows 7
VPNc Certified	Basic Interop
Snmp Device Compatible	N/A
Warranty	90-Day Media warranty

Store, Share, and Protect Your Data with NETGEAR ReadyNAS Storage Systems



NETGEAR is a leading provider of reliable, affordable, and simple storage solutions for organizations of all sizes. ReadyNAS storage solutions range from 2 to 6 bay desktop units, to high-performing 12 bay rack mount systems. ReadyNAS systems are the ideal solution for data backup, disaster recovery, file sharing, and virtualization in midsized IT environments. ReadyNAS storage solutions are tailored to deliver the performance, ease-of-use, and reliability your business requires.



ReadyNAS for Business

Advanced Network Storage - Reliable, Affordable, Simple

	GIGABIT NETWORK STORAGE								10GBE NETWORK STORAGE
	NEW DESKTOP	NEW DESKTOP	NEW DESKTOP	NEW RACKMOUNT	NEW RACKMOUNT	NEW RACKMOUNT	NEW RACKMOUNT	NEW RACKMOUNT	NEW RACKMOUNT
	ReadyNAS® Pro 2	ReadyNAS® Pro 4	ReadyNAS® Pro 6	ReadyNAS® 1500	ReadyNAS® 2100	ReadyNAS® 3100	ReadyNAS® 3200	ReadyNAS® 4200	
Form Factor	2-bay Desktop	4-bay Desktop	6-bay Desktop	4-bay 1U Rack	4-bay 1U Rack	4-bay 1U Rack	12-bay 2U Rack	12-bay 2U Rack	
File Protocols	NFS, CIFS, AFP, HTTP(s), FTP(s)	NFS, CIFS, AFP, HTTP(s), FTP(s)	NFS, CIFS, AFP, HTTP(s), FTP(s)	NFS, CIFS, AFP, HTTP(s), FTP(s)	NFS, CIFS, AFP, HTTP(s), FTP(s)	NFS, CIFS, AFP, HTTP(s), FTP(s)	NFS, CIFS, AFP, HTTP(s), FTP(s)	NFS, CIFS, AFP, HTTP(s), FTP(s)	
Block Protocols	iSCSI	iSCSI	iSCSI	–	iSCSI	iSCSI	iSCSI	iSCSI	
Populated drives	Regular SATA	Enterprise Class SATA	Enterprise Class SATA	Regular SATA	Enterprise Class SATA	Enterprise Class SATA	Enterprise Class SATA	Enterprise Class SATA	
Gigabit Network Port	2	2	2	2	2	2	2 + 2 optional	2 + 2 optional	
10 Gigabit Network Port	–	–	–	–	–	–	–	2 (or optional 2)	
Reliability Features	Hot Swappable Disk Failover Network Ports	Hot Swappable Disk Failover Network Ports	Hot Swappable Disk Failover Network Ports	Hot Swappable Disk Failover Network Ports	Hot Swappable Disk Failover Network Ports	Hot Swappable Disk Hot Swappable Redundant PSU Hot Swappable Redundant Cooling Failover Network Ports ECC Memory	Hot Swappable Disk Hot Swappable Redundant PSU Hot Swappable Redundant Cooling Failover Network Ports ECC Memory	Hot Swappable Disk Hot Swappable Redundant PSU Hot Swappable Redundant Cooling Failover Network Ports ECC Memory	
RAID level support	RAID 0, 1	RAID 0, 1, 5, w/hot spare	RAID 0, 1, 5, 6 w/hot spare	RAID 0, 1, 5, w/hot spare	RAID 0, 1, 5, w/hot spare	RAID 0, 1, 5, w/hot spare	RAID 0, 1, 5, 6 w/hot spare	RAID 0, 1, 5, 6 w/hot spare	
Auto Volume Management	X-RAID2	X-RAID2	X-RAID2	X-RAID2	X-RAID2	X-RAID2	X-RAID2 with Dual Redundancy	X-RAID2 with Dual Redundancy	
Performance	Read / Write	Read / Write	Read / Write	Read / Write	Read / Write	Read / Write	Read / Write	Read / Write	
Throughput (MBps)	102 / 100	109 / 111	107 / 110	83 / 73	109 / 111	113 / 115	109 / 112	486 / 435	
IOPS (Seq 4K block)	11445 / 9235	10130 / 9956	11680 / 12996	10782 / 8492	10130 / 9956	16078 / 11142	14309 / 15308	22953 / 19763	
Unique Features	Small Desktop Quiet Operation ReadyNAS Remote ReadyNAS Vault Embedded Replication	Small Desktop Quiet Operation ReadyNAS Remote ReadyNAS Vault Embedded Replication	Small Desktop Quiet Operation ReadyNAS Remote ReadyNAS Vault Embedded Replication	X-change Module ReadyNAS Remote ReadyNAS Vault Embedded Replication	X-change Module ReadyNAS Remote ReadyNAS Vault Embedded Replication	X-change Module ReadyNAS Remote ReadyNAS Vault Embedded Replication	ReadyNAS Remote ReadyNAS Vault Embedded Replication	ReadyNAS Remote ReadyNAS Vault Embedded Replication	
Backup Option Integration	Symantec RALUS support Acronis ABR10 Trial Bundle	Symantec RALUS support Acronis ABR10 Trial Bundle	Symantec RALUS support Acronis ABR10 Trial Bundle	Symantec RALUS support Acronis ABR10 Trial Bundle	Symantec RALUS support Acronis ABR10 Trial Bundle	Symantec RALUS support Acronis ABR10 Trial Bundle	Symantec RALUS support Acronis ABR10 Trial Bundle	Symantec RALUS support Acronis ABR10 Trial Bundle	
VMware Ready	Yes	Yes	Yes	–	Yes	Yes	Yes	Yes	
Cert for Windows Server 2008R2	Yes	Yes	Yes	–	Yes	Yes	Yes	Yes	
ReadyNAS® Vault 100GB for 1Yr	Yes	Yes	Yes	Yes	Yes	Yes	Yes	Yes	
Hybrid Cloud File Server	Egnyte OLC option	Egnyte OLC option	Egnyte OLC option	Egnyte OLC option	Egnyte OLC option	Egnyte OLC option	Egnyte OLC option	Egnyte OLC option	
ReadyNAS® Replicate (License Option)	RNOORPL1	RNOORPL1	RNOORPL1	RNOORPL2	RNOORPL2	RNOORPL2	RNOORPL2	RNOORPL2	
Warranty	5 Year Standard Warranty	5 Year Standard Warranty	5 Year Standard Warranty	3 Year Standard Warranty	5 Year Standard Warranty	5 Year Standard Warranty	5 Year Standard Warranty	5 Year Standard Warranty	
ProSupport Service Options	OnCall 24x7, – PMB0331, XPressHW, – PRR0331	OnCall 24x7, – PMB0332, XPressHW, – PRR0332	OnCall 24x7, – PMB0333, XPressHW, – PRR0333-100	OnCall 24x7, – PMB0333, XPressHW, – PRR0333-100	OnCall 24x7, – PMB0333, XPressHW, – PRR0333-100	OnCall 24x7, – PMB0333, XPressHW, – PRR0333-100	OnCall 24x7, PMB0334NA, XPressHW, PRR0334-10000S	OnCall 24x7, PMB0334NA, XPressHW, PRR0334-10000S	
System SKU	RNDP2210 RNDP2220	RNDP4410 RNDP4420	RNDP6310-200 RNDP6610-200 RNDP6620-200	RNRX441E RNRX442E	RNRX4410 RNRX4420 RNRX4450	RNRP4410 RNRP4420	RN12P1210 RN12P1220 RN12P0610	RN12T1210 and RN12T1220 [2x GbE] RN12G0620 and RN12G1220 [2x GbE plus 2x 10GbE on CX-4] RN12S0620 and RN12S120 [2x GbE plus 2x 10GbE on SFP+]	
Accessories and Spare Parts	RNDTRAY-10000S	RNDTRAY-10000S RND4PSU1-10000S	RNDTRAY-10000S	RNR4FAN1-10000S RNR4PSU1-10000S RNR4RL26-10000S RNRXTRAY1-10000S	RNR4FAN1-10000S RNR4PSU1-10000S RNR4RL26-10000S RNRXTRAY1-10000S RNRXXCHG-10000S	RNRP4PSU-100WWS RNRP4FAN-100WWS RN12PTRAY-100WWS	RN12P2GE-100WWS RN12PPSU-100WWS RN12PTRAY-100WWS RN12PFAN-100WWS RN12PRAIL-100WWS	RN12T2CX4-100WWS RN12T2SFP-100WWS RN12P2GE-100WWS RN12PPSU-100WWS RN12PTRAY-100WWS RN12PFAN-100WWS RN12PRAIL-100WWS	

ReadyNAS for Business

Advanced Network Storage - Reliable, Affordable, Simple



	READYNAS 4200				READYNAS 4200 W/10GBE (SFP+)	
MODEL	RN12T1210	RN12T0620	RN12T1220	RN12T1230	RN12S0620	RN12S1220
Product Description	ReadyNAS® 4200 2U rackmount Network Storage w/iSCSI SAN support					
Storage Capacity	12 TB (12 x 1 TB)	12 TB (6 x 2 TB)	24 TB (12 x 2 TB)	36 TB (12 x 3 TB)	12 TB (6 x 2 TB)	24 TB (12 x 2 TB)
Unified Architecture	•	•	•	•	•	•
Redundant Power Supply	•	•	•	•	•	•
Support Clients						
VMware Ready	•	•	•	•	•	•
Citrix Ready	•	•	•	•	•	•
Microsoft Windows Server logo	•	•	•	•	•	•
NETWORK PORTS						
Ports	2 x 10/100/1000 Mbps plus 2 optional 10GbE ports or 2 optional GbE ports	2 x 10/100/1000 Mbps plus 2 optional 10GbE ports or 2 optional GbE ports	2 x 10/100/1000 Mbps plus 2 optional 10GbE ports or 2 optional GbE ports	2 x 10/100/1000 Mbps plus 2 optional 10GbE ports or 2 optional GbE ports	2 x 10/100/1000 Mbps and 2 x 10GbE ports (SFP+)	2 x 10/100/1000 Mbps and 2 x 10GbE ports (SFP+)
10GE Support	Optional	Optional	Optional	Optional	2 x SFP+ ports included	2 x SFP+ ports included
Jumbo Support	•	•	•	•	•	•
Failover & Link Aggregation	•	•	•	•	•	•
RAID						
RAID	RAID 0, 1, 5, 6, 10 RAID 5 w/ Hot spare					
X-RAID2	Yes, X-RAID2 with dual Parity					
VOLUME MANAGEMENT						
Online volume expansion	•	•	•	•	•	•
Advanced Volume Mgmt (Slicing)	•	•	•	•	•	•
Snapshot	•	•	•	•	•	•
Quota Management	•	•	•	•	•	•
Journalled file system	•	•	•	•	•	•
NETWORK FILE SYSTEM						
Block-level Access	iSCSI target mode support					
File-level Access	CIFS/SMB for Windows; AFP 3.1 for Mac OS 9.X; NFS v2/v3 for Linux and UNIX; HTTP(s) for web browsers; FTP(s) support; Rsync					
NETWORK SECURITY						
Share, user, domain/ADS modes	•	•	•	•	•	•
Windows ACL	•	•	•	•	•	•
Encrypted network logins	•	•	•	•	•	•
POWER-SAVING OPTIONS						
Power-saving options	Power on/off schedule, Wake-on-LAN					
USABILITY						
Web management	•	•	•	•	•	•
GUI Set-up Wizard	•	•	•	•	•	•
Status LED display	•	•	•	•	•	•
Email Alerts	•	•	•	•	•	•
BACKUP						
Integrated Backup Manager	•	•	•	•	•	•
Acronis Backup & Recovery software 90-day free trial bundle	•	•	•	•	•	•
Remote backup over CIFS/NFS/FTP/HTTP	•	•	•	•	•	•
Rsync backup to/from USB disks	•	•	•	•	•	•
Secure Replication over rsync	•	•	•	•	•	•
Support of Symantec Backup Exec Agent	•	•	•	•	•	•
ReadyNAS Vault Cloud backup option	•	•	•	•	•	•
ReadyNAS Replicate Software License Option (part number)	RN00RPL2	RN00RPL2	RN00RPL2	RN00RPL2	RN00RPL2	RN00RPL2
Remote Access	HTTP, HTTPS, FTP, FTPS, WebDAV, ReadyNAS Remote					
ReadyNAS Remote	•	•	•	•	•	•
Hybrid Cloud Option	•	•	•	•	•	•
Servers & Network Options	DHCP Server; WINS; NTP; SNMP					
OTHERS						
Form Factor	Rack mount 2U	Rack mount 2U	Rack mount 2U	Rack mount 2U	Rack mount 2U	Rack mount 2U
Accessory, spare parts	hot-swappable tray, PSU, rack-mount rail, cooling FAN, GE network add-on card, 10GE add-on card (CX-4 or SFP+)					
Reliability features	Hot-swappable disk trays, Redundant PSU, Redundant cooling fan, ECC memory					
Physical Dimensions (W x D x H)	437 x 648 x 89 mm (17.2 x 25.5 x 3.5 in)	437 x 648 x 89 mm (17.2 x 25.5 x 3.5 in)	437 x 648 x 89 mm (17.2 x 25.5 x 3.5 in)	437 x 648 x 89 mm (17.2 x 25.5 x 3.5 in)	437 x 648 x 89 mm (17.2 x 25.5 x 3.5 in)	437 x 648 x 89 mm (17.2 x 25.5 x 3.5 in)
Warranty	5 Year Warranty, Onsite Replacement (3 Years) Included**					
ProSupport Options - Oncall 24x7 - XPRESS5HW	PMB0334 PRR0334-100	PMB0334 PRR0334-100	PMB0334 PRR0334-100	PMB0334 PRR0334-100	PMB0334 PRR0334-100	PMB0334 PRR0334-100

**Next business day onsite replacement support. Advanced registration required. For a list of countries where service is available, and terms and conditions visit <http://onsite.netgear.com>.

ReadyNAS for Business

Advanced Network Storage - Reliable, Affordable, Simple

	READYNAS 3200				READYNAS 3100		
MODEL	RN12P0610	RN12P0620	RN12P1210	RN12P1220	RNRP4410	RNRP4420	RNRP4430
Product Description	ReadyNAS® 3200 2U rackmount Network Storage w/iSCSI SAN support				ReadyNAS® 3100 1U rackmount Network Storage w/iSCSI SAN support		
Storage Capacity	6 TB (6 x 1 TB)	12 TB (6 x 2 TB)	12 TB (12 x 1 TB)	24 TB (12 x 2 TB)	4 TB (4 x 1 TB)	8 TB (4 x 2 TB)	12 TB (4 x 3 TB)
Unified Architecture	•	•	•	•	•	•	•
Redundant Power Supply	•	•	•	•	•	•	•
Support Clients	Windows, Mac, Linux/UNIX, HTTP(s), FTP(s), iSCSI target						
VMware Ready	•	•	•	•	•	•	•
Citrix Ready	•	•	•	•	•	•	•
Microsoft Windows Server logo	•	•	•	•	•	•	•
NETWORK PORTS							
Ports	2 x 10/100/1000 Mbps plus 2 optional GbE ports				2 x 10/100/1000 Mbps	2 x 10/100/1000 Mbps	2 x 10/100/1000 Mbps
10GE Support	N/A	N/A	N/A	N/A			
Jumbo Support	•	•	•	•	•	•	•
Failover & Link Aggregation	•	•	•	•	•	•	•
RAID							
RAID	RAID 0, 1, 5, 6, 10 RAID 5 w/ Hot spare						
X-RAID2	Yes, X-RAID2 with dual Parity						
VOLUME MANAGEMENT							
Online volume expansion	•	•	•	•	•	•	•
Advanced Volume Mgmt (Slicing)	•	•	•	•	•	•	•
Snapshot	•	•	•	•	•	•	•
Quota Management	•	•	•	•	•	•	•
Journalled file system	•	•	•	•	•	•	•
NETWORK FILE SYSTEM							
Block-level Access	iSCSI target mode support				iSCSI target, Support up to 512 LUNs, Support of SCSI-3 persistent reservation		
File-level Access	CIFS/SMB for Windows ; AFP 3.1 for Mac OS 9.X; NFS v2/v3 for Linux and UNIX; HTTP(s) for web browsers; FTP(s) support; Rsync						
NETWORK SECURITY							
Share, user, domain/ADS modes	•	•	•	•	•	•	•
Windows ACL	•	•	•	•	•	•	•
Encrypted network logins	•	•	•	•	•	•	•
POWER-SAVING OPTIONS							
Power-saving options	Power on/off schedule, Wake-on-LAN				Disk spin-down, Power on/off schedule, Wake-on-LAN		
USABILITY							
Web management	•	•	•	•	•	•	•
GUI Set-up Wizard	•	•	•	•	•	•	•
Status LED display	•	•	•	•	•	•	•
Email Alerts	•	•	•	•	•	•	•
BACKUP							
Integrated Backup Manager	•	•	•	•	•	•	•
Acronis Backup & Recovery software 90-day free trial bundle	•	•	•	•	•	•	•
Remote backup over CIFS/NFS/FTP/HTTP	•	•	•	•	•	•	•
Rsync backup to/from USB disks	•	•	•	•	•	•	•
Secure Replication over rsync	•	•	•	•	•	•	•
Support of Symantec Backup Exec Agent	•	•	•	•	•	•	•
ReadyNAS Vault Cloud backup option	•	•	•	•	•	•	•
ReadyNAS Replicate Software License Option (part number)	RNOORPL2	RNOORPL2	RNOORPL2	RNOORPL2	RNOORPL2	RNOORPL2	RNOORPL2
Remote Access							
ReadyNAS Remote	HTTP, HTTPS, FTP, FTPS, WebDAV, ReadyNAS Remote						
Hybrid Cloud Option	•	•	•	•	•	•	•
Servers & Network Options	DHCP Server; WINS; NTP; SNMP						
OTHERS							
Form Factor	Rack mount 2U	Rack mount 2U	Rack mount 2U	Rack mount 2U	Rack mount 1U	Rack mount 1U	Rack mount 1U
Accessory, spare parts	Hot-swappable tray, PSU, rack-mount rail, cooling FAN, GE network add-on card				Hot-swappable trays, cooling fan, PSU, sliding rail kit		
Reliability features	Hot-swappable disk trays, Redundant PSU, Redundant cooling fan, ECC memory						
Physical Dimensions (W x D x H)	437 x 648 x 89 mm (17.2 x 25.5 x 3.5 in)	437 x 648 x 89 mm (17.2 x 25.5 x 3.5 in)	437 x 648 x 89 mm (17.2 x 25.5 x 3.5 in)	437 x 648 x 89 mm (17.2 x 25.5 x 3.5 in)	43 x 437 x 650 mm (1.7 x 17.2 x 25.6 in)	43 x 437 x 650 mm (1.7 x 17.2 x 25.6 in)	43 x 437 x 650 mm (1.7 x 17.2 x 25.6 in)
Warranty	5 Year Warranty. Onsite Replacement (3 Years) Included**						
ProSupport Options - Oncall 24x7 - XPRESSSHW	PMB0333 PRR0333-100	PMB0333 PRR0333-100	PMB0333 PRR0333-100	PMB0333 PRR0333-100	PMB0334 PRR0334-100	PMB0334 PRR0334-100	PMB0334 PRR0334-100

**Next business day onsite replacement support. Advanced registration required. For a list of countries where service is available, and terms and conditions visit <http://onsite.netgear.com>.

ReadyNAS for Business

Advanced Network Storage – Reliable, Affordable, Simple



MODEL	READYNAS 2100			READYNAS 1500		
	RNRX4410	RNRX4420	RNRX4430	RNRX441E	RNRX442E	RNRX443E
Product Description	ReadyNAS® 2100 1U rackmount Network Storage w/iSCSI SAN Support			ReadyNAS 1500 Network Storage		
Storage Capacity	4 TB (4 x 1 TB)	8 TB (4 x 2 TB)	12 TB (4 x 3 TB)	4 TB (4 x 1TB)	8 TB (4 x 2 TB)	12 TB (4 x 3TB)
Unified Architecture	•	•	•			
Support Clients			Windows, Mac, Linux/UNIX, HTTP(s), FTP(s), iSCSI target			
VMware Ready	•	•	•			
Citrix Ready	•	•	•			
Microsoft Windows Server logo	•	•	•			
NETWORK PORTS						
Ports	2 x 10/100/1000 Mbps	2 x 10/100/1000 Mbps	2 x 10/100/1000 Mbps	2 x 10/100/1000 Mbps	2 x 10/100/1000 Mbps	2 x 10/100/1000 Mbps
Jumbo Support	•	•	•	•	•	•
Failover & Link Aggregation	•	•	•	•	•	•
RAID						
RAID 0, 1, 5, 10, RAID 5 w/ Hotspare	•	•	•	Yes	Yes	Yes
X-RAID2	•	•	•	X-RAID 2	X-RAID 2	X-RAID 2
VOLUME MANAGEMENT						
Online volume expansion	•	•	•	•	•	•
Advanced Volume MgMt (Slicing)	•	•	•	•	•	•
Snapshot	•	•	•	•	•	•
Quota Management	•	•	•	•	•	•
Journalled file system	•	•	•	•	•	•
NETWORK FILE SYSTEM						
Block-level Access	iSCSI target, Support up to 512 LUNs, Support of SCSI-3 persistent reservation					
File-level Access	CIFS/SMB for Windows; AFP 3.1 for Mac OS 9.X; NFS v2/v3 for Linux and UNIX; HTTP(s) for web browsers; FTP(s) support; Rsync			CIFS/SMB, AFP, NFS v2/v3, HTTP(s), FTP(s), Rsync		
NETWORK SECURITY						
Share, user, domain/ADS modes	•	•	•	•	•	•
Windows ACL	•	•	•	•	•	•
Encrypted network logins	•	•	•	•	•	•
Secure Sockets Layer				•	•	•
POWER-SAVING OPTIONS						
Power-saving options	Disk spin-down, Power on/off schedule, Wake-on-LAN			Disk spin-down, controlled cooling fan, Power on/off schedule, Wake-on-LAN		
USABILITY						
Web management	•	•	•	•	•	•
GUI Set-up Wizard	•	•	•	•	•	•
Status LED display	•	•	•	LED	LED	LED
Email Alerts	•	•	•	•	•	•
BACKUP						
Integrated Backup Manager	•	•	•	•	•	•
Acronis Backup & Recovery software 90-day free trial bundle	•	•	•	•	•	•
Programmable backup button	•	•	•	•	•	•
Remote backup over CIFS/NFS/FTP/HTTP	•	•	•	•	•	•
Rsync backup to/from USB disks	•	•	•	•	•	•
Secure Replication over rsync	•	•	•	•	•	•
Support of Symantec Backup Exec Agent	•	•	•	•	•	•
ReadyNAS Vault Cloud backup option	•	•	•	•	•	•
ReadyNAS Replicate Software License Option (part number)	RN00RP12	RN00RP12	RN00RP12	RN00RP12	RN00RP12	RN00RP12
REMOTE ACCESS						
Remote Access	HTTP, HTTPS, FTP, FTPS, WebDAV, ReadyNAS Remote			HTTP, HTTPS, FTP, FTPS, WebDAV, ReadyNAS Remote – native secure remote access		
ReadyNAS Remote	•	•	•	•	•	•
Hybrid Cloud Option	•	•	•	•	•	•
Servers & Network Options	DHCP Server, WINS, NTP, SNMP			DHCP Server, WINS, Print server, NTP, SNMP		
OTHERS						
Form Factor	Compact Rack mount 1U	Compact Rack mount 1U	Compact Rack mount 1U	Compact Rack mount 1U	Compact Rack mount 1U	Compact Rack mount 1U
Spare Parts/Accessories	Hot-swappable trays, X-Change module					
Reliability Design/Reliability Feature	Hot-swappable disk trays, X-Change Rapid System Board replacement module					
Physical Dimensions (W x D x H)	429 x 318 x 43 mm (16.9 x 12.5 x 1.7 in.)	429 x 318 x 43 mm (16.9 x 12.5 x 1.7 in.)	429 x 318 x 43 mm (16.9 x 12.5 x 1.7 in.)	429 x 318 x 43 mm (16.9 x 12.5 x 1.7 in.)	429 x 318 x 43 mm (16.9 x 12.5 x 1.7 in.)	429 x 318 x 43 mm (16.9 x 12.5 x 1.7 in.)
Warranty	5 Year Warranty	5 Year Warranty	5 Year Warranty	3 Year Warranty	3 Year Warranty	3 Year Warranty
ProSupport Options - On-call 24X7 - XPRESSSHW	PMB0333 PRR0333-100	PMB0333 PRR0333-100	PMB0333 PRR0333-100	PMB0333 PRR0333-100	PMB0333 PRR0333-100	PMB0333 PRR0333-100

ReadyNAS for Business

Advanced Network Storage - Reliable, Affordable, Simple



	READYNAS PRO 6				READYNAS PRO 4		
MODEL	RNDP6310-200	RNDP6610-200	RNDP6620-200	RNDP6630-200	RNDP4410	RNDP4420	RNDP4430
Product Description	ReadyNAS® Pro 6 desktop Unified Network Storage	ReadyNAS® Pro 6 desktop Unified Network Storage	ReadyNAS® Pro 6 desktop Unified Network Storage	ReadyNAS® Pro 6 desktop Unified Network Storage	ReadyNAS® Pro 4 desktop Unified Network Storage	ReadyNAS® Pro 4 desktop Unified Network Storage	ReadyNAS® Pro 4 desktop Unified Network Storage
Storage Capacity	3 TB (3 x 1TB)	6 TB (6 x 1TB)	12 TB (6 x 2TB)	18 TB (6 x 3TB)	4 TB (4 x 1TB)	8 TB (4 x 2TB)	12 TB (4 x 3TB)
Unified Architecture	•	•	•	•	•	•	•
Support Clients	Windows, Mac, Linux/UNIX, HTTP(s), FTP(s), and iSCSI target				Windows, Mac, Linux/UNIX, HTTP(s), FTP(s), and iSCSI target		
VMware Ready	•	•	•	•	•	•	•
Citrix Ready	•	•	•	•	•	•	•
Microsoft Windows Server logo	•	•	•	•	•	•	•
NETWORK PORTS							
Ports	2 x 10/100/1000 Mbps	2 x 10/100/1000 Mbps	2 x 10/100/1000 Mbps	2 x 10/100/1000 Mbps	2 x 10/100/1000 Mbps	2 x 10/100/1000 Mbps	2 x 10/100/1000 Mbps
Jumbo Support	•	•	•	•	•	•	•
Failover & Link Aggregation	•	•	•	•	•	•	•
RAID							
RAID 0, 1, 5, RAID 5 w/Hotspare	Yes, and RAID 6	Yes, and RAID 6	Yes, and RAID 6	Yes, and RAID 6	Yes	Yes	Yes
X-RAID2	X-RAID 2	X-RAID 2	X-RAID 2	X-RAID 2	X-RAID 2	X-RAID 2	X-RAID 2
VOLUME MANAGEMENT							
Online volume expansion	•	•	•	•	•	•	•
Advanced Volume Mgmt (Slicing)	•	•	•	•	•	•	•
Snapshot	•	•	•	•	•	•	•
Quota Management	•	•	•	•	•	•	•
Journalled file system	•	•	•	•	•	•	•
NETWORK FILE SYSTEM							
Block-level Access	iSCSI target mode support				iSCSI target mode support		
File-level Access	CIFS/SMB for Windows ; AFP 3.1 for Mac OS 9.X; NFS v2/v3 for Linux/UNIX; HTTP(s); FTP(s); Rsync				CIFS/SMB for Windows ; AFP 3.1 for Mac OS 9.X; NFS v2/v3 for Linux/UNIX; HTTP(s); FTP(s); Rsync		
NETWORK SECURITY							
Share, user, domain/ADS modes	•	•	•	•	•	•	•
Windows ACL	•	•	•	•	•	•	•
Encrypted network logins	•	•	•	•	•	•	•
Secure Sockets Layer	•	•	•	•	•	•	•
POWER-SAVING OPTIONS							
Power-saving options	Disk spin-down, controlled cooling fan, Power on/off schedule, Wake-on-LAN				Disk spin-down, controlled cooling fan, Power on/off schedule, Wake-on-LAN		
USABILITY							
Web management	•	•	•	•	•	•	•
GUI Set-up Wizard	•	•	•	•	•	•	•
Status LED display	Yes, plus OLED display	Yes, plus OLED display	Yes, plus OLED display	Yes, plus OLED display	Yes, plus LCD display	Yes, plus LCD display	Yes, plus LCD display
Email Alerts	•	•	•	•	•	•	•
BACKUP							
Integrated Backup Manager	•	•	•	•	•	•	•
Acronis Backup & Recovery software 90-day free trial bundle	•	•	•	•	•	•	•
Programmable backup button	•	•	•	•	•	•	•
Remote backup over CIFS/NFS/FTP/HTTP	•	•	•	•	•	•	•
Rsync backup to/from USB disks	•	•	•	•	•	•	•
Secure Replication over rsync	•	•	•	•	•	•	•
Support of Symantec Agent	•	•	•	•	•	•	•
ReadyNAS Vault Option	•	•	•	•	•	•	•
ReadyNAS Replicate Software License	RNOORPL1	RNOORPL1	RNOORPL1	RNOORPL1	RNOORPL1	RNOORPL1	RNOORPL1
Remote Access	HTTP, HTTPS, FTP, FTPS, WebDAV, ReadyNAS Remote – native secure remote access				HTTP, HTTPS, FTP, FTPS, WebDAV, ReadyNAS Remote – native secure remote access		
ReadyNAS Remote	•	•	•	•	•	•	•
Hybrid Cloud Option	•	•	•	•	•	•	•
Servers & Network Options	DHCP Server; WINS; Print server; NTP; SNMP				DHCP Server; WINS; Print server; NTP; SNMP		
PHYSICAL							
Desktop/Rackmount	Desktop w/6 hot-swappable trays				Desktop w/4 hot-swappable trays		
OTHERS	OLED display for system status readout				LCD display for system status readout		
Physical Dimensions (W x D x H)	170 x 285 x 250 mm (6.7 x 11.2 x 10.0 in)	170 x 285 x 250 mm (6.7 x 11.2 x 10.0 in)	170 x 285 x 250 mm (6.7 x 11.2 x 10.0 in)	170 x 285 x 250 mm (6.7 x 11.2 x 10.0 in)	132 x 222 x 200 mm (5.2 x 8.7 x 7.9 in)	132 x 222 x 200 mm (5.2 x 8.7 x 7.9 in)	132 x 222 x 200 mm (5.2 x 8.7 x 7.9 in)
Warranty	5 Year Warranty	5 Year Warranty	5 Year Warranty	5 Year Warranty	5 Year Warranty	5 Year Warranty	5 Year Warranty
ProSupport Options - On-call 24x7 - XPRESSSHW	PMB0333 PRR0333-100	PMB0333 PRR0333-100	PMB0333 PRR0333-100	PMB0333 PRR0333-100	PMB0332 PRR0332-100	PMB0332 PRR0332-100	PMB0332 PRR0332-100

ReadyNAS for Business

Advanced Network Storage - Reliable, Affordable, Simple



	READYNAS PRO 2			READYNAS PRO 2 DISKLESS	READYNAS PRO 4 DISKLESS	READYNAS PRO 6 DISKLESS
MODEL	RNDP2210	RNDP2220	RNDP2230	RNDP2000	RNDP4000	RNDP6000-200
Product Description	ReadyNAS® Pro 2 Unified Network Storage	ReadyNAS® Pro 2 Unified Network Storage	ReadyNAS® Pro 2 Unified Network Storage	ReadyNAS® Pro 2 Unified Network Storage	ReadyNAS® Pro 4 Unified Network Storage	ReadyNAS® Pro 6 Unified Network Storage
Storage Capacity	2 TB (2 x 1 TB)	4 TB (2 x 2 TB)	6 TB (2 x 3 TB)	0	0	0
Unified Architecture	•	•	•	•	•	•
Support Clients	Windows, Mac, Linux/UNIX, HTTP(s), FTP(s), and iSCSI target			Windows, Mac, Linux/UNIX, HTTP(s), FTP(s), and iSCSI target		
VMware Ready	•	•	•	•	•	•
Citrix Ready	•	•	•	•	•	•
Microsoft Windows Server logo	•	•	•	•	•	•
NETWORK PORTS						
Ports	2 x 10/100/1000 Mbps	2 x 10/100/1000 Mbps	2 x 10/100/1000 Mbps	2 x 10/100/1000 Mbps	2 x 10/100/1000 Mbps	2 x 10/100/1000 Mbps
Jumbo Support	•	•	•	•	•	•
Failover & Link Aggregation	•	•	•	•	•	•
RAID						
RAID 0, 1, 5, RAID 5 w/Hotspare	RAID 0/1	RAID 0/1	RAID 0/1	RAID 0/1	Yes	Yes, and RAID 6
X-RAID2	X-RAID 2	X-RAID 2	RAID 0/1	X-RAID 2	X-RAID 2	X-RAID 2
VOLUME MANAGEMENT						
Online volume expansion	•	•	•	•	•	•
Advanced Volume MgMt (Slicing)	•	•	•	•	•	•
Snapshot	•	•	•	•	•	•
Quota Management	•	•	•	•	•	•
Journalized file system	•	•	•	•	•	•
NETWORK FILE SYSTEM						
Block-level Access	iSCSI target mode support			iSCSI target mode support		
File-level Access	CIFS/SMB for Windows ; AFP 3.1 for Mac OS 9.X; NFS v2/v3 for Linux/UNIX; HTTP(s); FTP(s); Rsync			CIFS/SMB, AFP, NFS v2/v3, HTTP(s), FTP(s), Rsync		
NETWORK SECURITY						
Share, user, domain/ADS modes	•	•	•	•	•	•
Windows ACL	•	•	•	•	•	•
Encrypted network logins	•	•	•	•	•	•
Secure Sickets Layer	•	•	•	•	•	•
POWER-SAVING OPTIONS						
Power-saving options	Disk spin-down, controlled cooling fan, Power on/off schedule, Wake-on-LAN			Disk spin-down, controlled cooling fan, Power on/off schedule, Wake-on-LAN		
USABILITY						
Web management	•	•	•	•	•	•
GUI Set-up Wizard	•	•	•	•	•	•
Status LED display	Yes	Yes	Yes	Yes	Yes, plus LCD display	Yes, plus OLED display
Email Alerts	•	•	•	•	•	•
BACKUP						
Integrated Backup Manager	•	•	•	•	•	•
Acronis Backup & Recovery software 90-day free trial bundle	•	•	•	•	•	•
Programmable backup button	•	•	•	•	•	•
Remote backup over CIFS/NFS/FTP/HTTP	•	•	•	•	•	•
Rsync backup to/from USB disks	•	•	•	•	•	•
Secure Replication over rsync	•	•	•	•	•	•
Support of Symantec Agent	•	•	•	•	•	•
ReadyNAS Vault Option	•	•	•	•	•	•
ReadyNAS Replicate Software License	RNOORPL1	RNOORPL1	RNOORPL1	RNOORPL1	RNOORPL1	RNOORPL1
Remote Access	HTTP, HTTPS, FTP, FTPS, WebDAV, ReadyNAS Remote – native secure remote access			HTTP, HTTPS, FTP, FTPS, WebDAV, ReadyNAS Remote – native secure remote access		
ReadyNAS Remote	•	•	•	•	•	•
Hybrid Cloud Option	•	•	•	•	•	•
Servers & Network Options	DHCP Server; WINS; Print server; NTP; SNMP			DHCP Server; WINS; Print server; NTP; SNMP		
PHYSICAL						
Desktop/Rackmount	Desktop w/2 hot-swappable trays	Desktop w/2 hot-swappable trays	Desktop w/2 hot-swappable trays	Desktop w/2 hot-swappable trays	Desktop w/4 hot-swappable trays	Desktop w/6 hot-swappable trays
OTHERS						
Physical Dimensions (W x D x H)	101 x 222 x 142 mm (4 x 8.7 x 5.6 in.)	101 x 222 x 142 mm (4 x 8.7 x 5.6 in.)	101 x 222 x 142 mm (4 x 8.7 x 5.6 in.)	101 x 222 x 142 mm (4 x 8.7 x 5.6 in.)	132 x 222 x 200 mm (5.2 x 8.7 x 7.9 in)	170 x 285 x 250 mm (6.7 x 11.2 x 10.0 in)
Warranty	5 Year Warranty	5 Year Warranty	5 Year Warranty	5 Year Warranty	5 Year Warranty	5 Year Warranty
ProSupport Options - Oncall 24X7 - XPRESSSHW	PMB0332 PRR0332-100	PMB0332 PRR0332-100	PMB0332 PRR0332-100	PMB0332 PRR0332-100	PMB0332 PRR0332-100	PMB0333 PRR0333-100

Support and Management

ProSupport

Service Portfolio for all ProSafe and ReadyNAS Business Class Products

NETGEAR offers professional, a-round-the-clock service support over the telephone and next-working-day product replacement. The following service support contracts are valid for 3 years. Choose the right level of service for your NETGEAR network:



ONCALL 24x7 WITH XPRESSHW

NETGEAR OnCall 24x7 ProSupport service covers unlimited phone and email-based technical support for standard and advanced features. In the event of a hardware failure, NETGEAR will ensure that a replacement product is delivered for next-business-day arrival. NETGEAR recommends the OnCall 24x7 offering for customers seeking hardware and software coverage.

Category 1 – Order using PMB0331-100 (US ONLY), PMB0331 Code

- DGFV338, FS108, FS108P, FS116, FS116E, FS116P, FS726T, FS726TP, FS728TP, FS728TS, FS750T2, FS752TS, FSM7226RS, FSM726, FSM726E, FSM726-300, FVG318, FVS318, FVS318G, FVS336G, FVS338, FVS538, GS105, GS105E, GS108, GS108T, GS110TP, GS116, GS524T, GS716T, GS724AT, GS724T, GS724TR, GS724TS, GS748AT, GS748T, JFS516, JFS524, JFS524E, JFS524F, JGS516, JGS524, JGS524F, RND2XXX, SRX5308, SRXN3205, WAGL102, WAG102, WAG302, WGL102, WG102, WG103, WG302, WNAP210, WNDAP330, WNDAP350

Category 2 – Order using PMB0332 Code

- FSM7250RS, FSM7328S, FSM7352S, GS724TP, GS724TPS, GS748TP, GS748TPS, GS748TR, GS748TS, GSM7212, GSM7224, GSM7224R, GSM7312, RND4XXX, RNDP400U, RNDP4XXX, RNDU4XXX, RNDX400E, RNDXXX, WMS5316

Category 3 – Order using PMB0333 Code

- FSM7352PS, GSM7228PS, GSM7248, GSM7248R, GSM7324, GSM7328FS, GSM7328S, RNDP600U, RNDP6XXX, RNDU6XXX, RNR4410, RNR4425, RNR4450, RNR4475, RNR4410, RNR4420, RNR4410, RNR4420, RNR4450, WC7520, WFS709TP

Category 4 – Order using PMB0334 Code

- GSM7252PS, GSM7352S, RN12P0610, RN12P1210, RN12P1220, RN12G0620, RN12G1220, RN12S0620, RN12S1220, RN12T1210, RN12T1220

XPRESSHW

NETGEAR XPressHW service offering provides phone-based basic hardware support and next-business-day express hardware replacement in the event of failure. NETGEAR recommends XPressHW for businesses that are looking for the most cost-effective way to protect their hardware investment.

Category 1 – Order using PRR0331 Code

- DGFV338, FS108, FS108P, FS116, FS116E, FS116P, FS726T, FS726TP, FS728TP, FS728TS, FS750T2, FS752TS, FSM7226RS, FSM726, FSM726E, FSM726-300, FVG318, FVS318, FVS318G, FVS336G, FVS338, FVS538, GS105, GS105E, GS108, GS108T, GS110TP, GS116, GS524T, GS716T, GS724AT, GS724T, GS724TR, GS724TS, GS748AT, GS748T, JFS516, JFS524, JFS524E, JFS524F, JGS516, JGS524, JGS524F, RND2XXX, SRX5308, SRXN3205, WAGL102, WAG102, WAG302, WGL102, WG102, WG103, WG302, WNAP210, WNDAP330, WNDAP350

Category 2 – Order using PRR0332-100 Code

- FSM7250RS, FSM7328S, FSM7352S, GS724TP, GS724TPS, GS748TP, GS748TPS, GS748TR, GS748TS, GSM7212, GSM7224, GSM7224R, GSM7312, RND4XXX, RNDP400U, RNDP4XXX, RNDU4XXX, RNDX400E, RNDXXX, WMS5316

Category 3 – Order using PRR0333-100 Code

- FSM7352PS, GSM7228PS, GSM7248, GSM7248R, GSM7324, GSM7328FS, GSM7328S, RNDP600U, RNDP6XXX, RNDU6XXX, RNR4410, RNR4425, RNR4450, RNR4475, RNR4410, RNR4420, RNR4410, RNR4420, RNR4450, WC7520, WFS709TP

Category 4 – Order using PRR0334-10000S or PRR0334E-100NAS (US Only) Code

- GSM7252PS, GSM7352S, RN12P0610, RN12P1210, RN12P1220, RN12G0620, RN12G1220, RN12S0620, RN12S1220, RN12T1210, RN12T1220

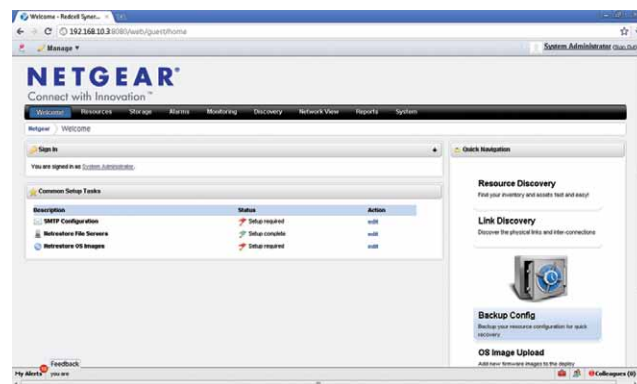
For more information on NETGEAR Support go to www.netgear.com/support

ReadyNAS® Replicate™

Your business already entrusts your most important data to the ReadyNAS. ReadyNAS Replicate simplifies the replication of that data to another ReadyNAS whether the two systems are on the same LAN or whether they're a world apart. Simply set up the replication job and run the initial replication locally. Then move the second ReadyNAS anywhere with Internet access, and the replication continues, with no additional setup. As you can see, ReadyNAS Replicate is just one of many smart ways that the ReadyNAS simplifies your business storage needs.



Prosafe Software



MODEL	NETWORK MANAGEMENT SOFTWARE — NMS200
Product Description	ProSafe® Network Management Software
Features	Powerful, scalable and simple to use Single console for extensive visibility, granular control, and seamless automation Configuration and Firmware/OS management
NETGEAR®-Compatible Devices	XCM8800 Series Chassis Switches, ProSafe Managed Switches, ProSafe Smart Switches, ProSafe Wireless Controllers, ProSafe Wireless Access Points, ReadyNAS Storage Devices
Warranty	90-Day Media warranty

Warranties

Lifetime Hardware Warranty Switching and Wireless



ProSafe products are designed and built to the high standards that are required for business class networks. To clearly demonstrate that NETGEAR products offer world-class quality, NETGEAR now offers the original purchaser a full lifetime hardware warranty on ProSafe products including switches, firewalls and wireless access points.



*The lifetime hardware warranty only covers hardware, fans, and internal power supplies, and does not include external power supplies or software. Hardware modifications or customization void the warranty. The warranty is only valid for the original purchaser and cannot be transferred.

**Next business day onsite replacement support. Advanced registration required. For a list of countries where service is available, and terms and conditions visit <http://onsite.netgear.com>.

5 - Year Hardware Warranty Storage



Network Attached Storage (NAS) is dedicated hard-disk-based storage technology designed to be connected directly to a computer network, providing centralized data access to multiple network clients for your small or medium-sized business. NETGEAR ReadyNAS business products are now available with an industry-leading 5-year hardware warranty (ReadyNAS 1500 is covered under the 3-Year hardware warranty).



*The 5-Year hardware warranty only covers hardware, fans, and internal power supplies, and does not include external power supplies or software. Hardware modifications or customization void the warranty. The warranty is only valid for the original purchaser and cannot be transferred.

**Next business day onsite replacement support. Advanced registration required. For a list of countries where service is available, and terms and conditions visit <http://onsite.netgear.com>.

ProSecure Warranty Security



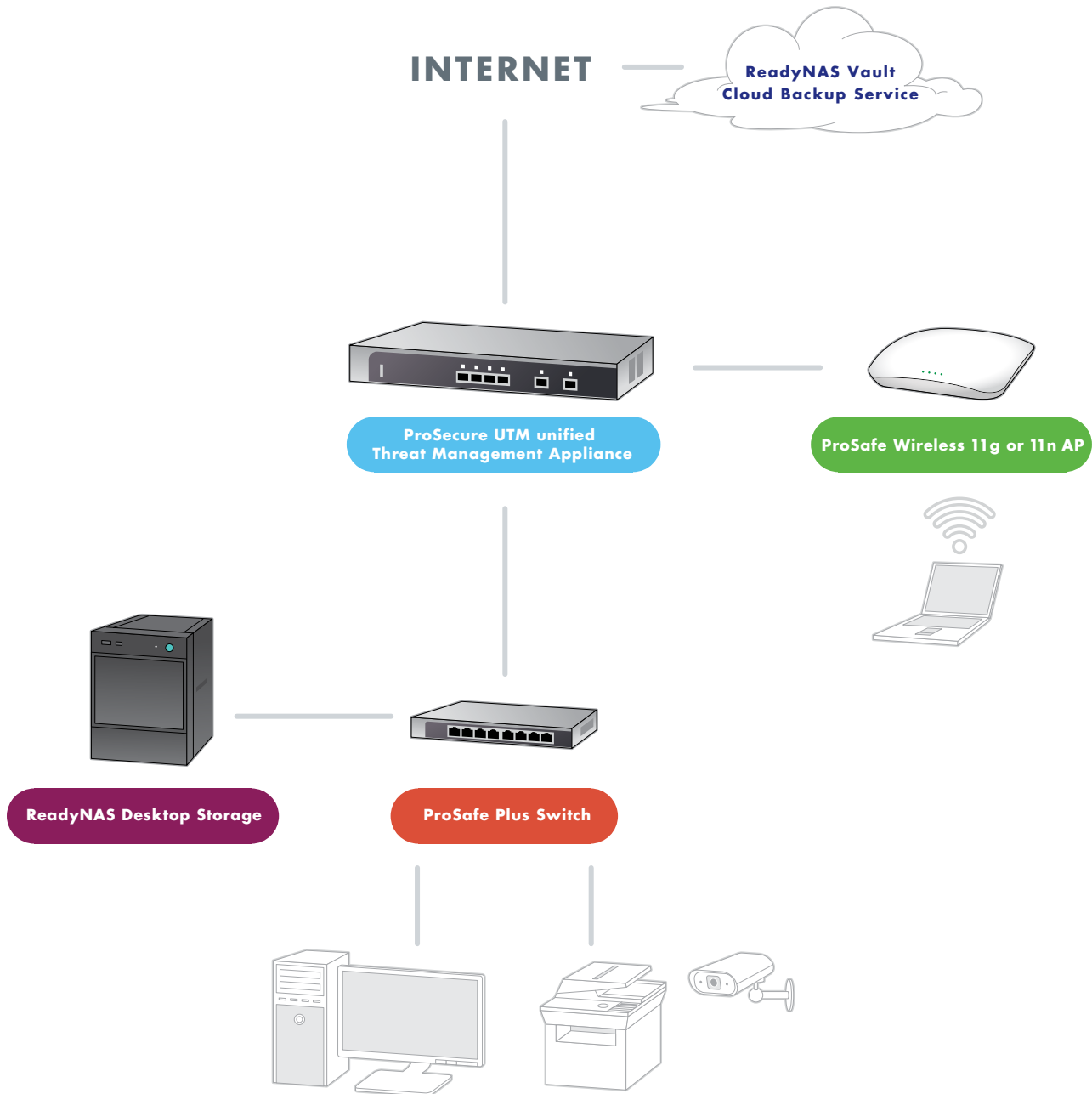
ProSecure brings enterprise-class Web and Email security to the SMB. Built on a patent-pending stream scanning architecture, NETGEAR ProSecure provides a comprehensive, best-of-breed security solution, including proactive, "zero-hour" detection and "set it and forget it" administration. All ProSecure business products are available with a 2-Year hardware warranty.



*The 2-Year hardware warranty only covers hardware, fans, and internal power supplies, and does not include external power supplies or software. Hardware modifications or customization void the warranty. The warranty is only valid for the original purchaser and cannot be transferred.

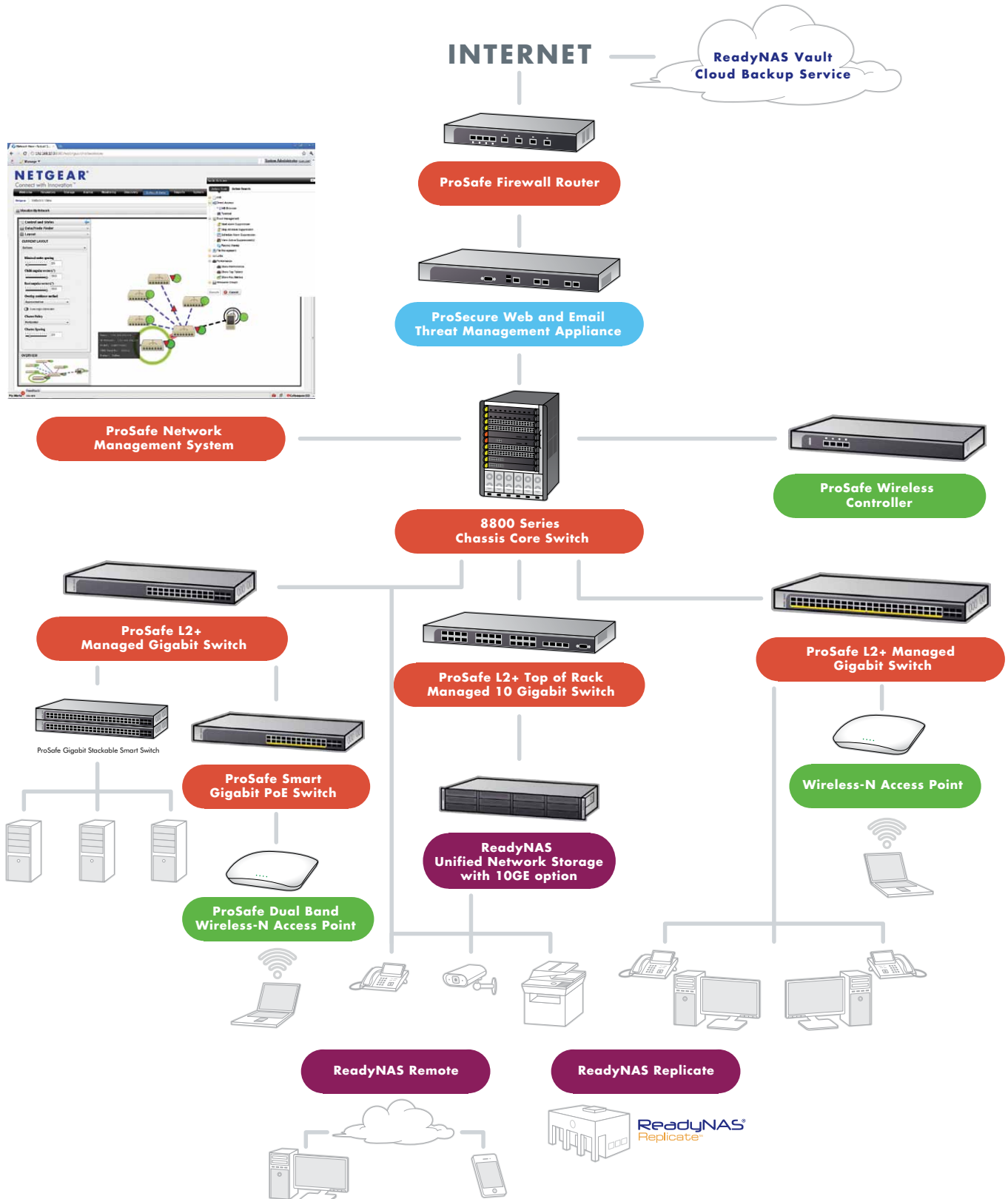
🏠 Network Solution for Small Office and Home Office (SoHo), 1-4 Users

Connection Setup



Network Solution for a Growing Mid-size Business, 76-250 Users

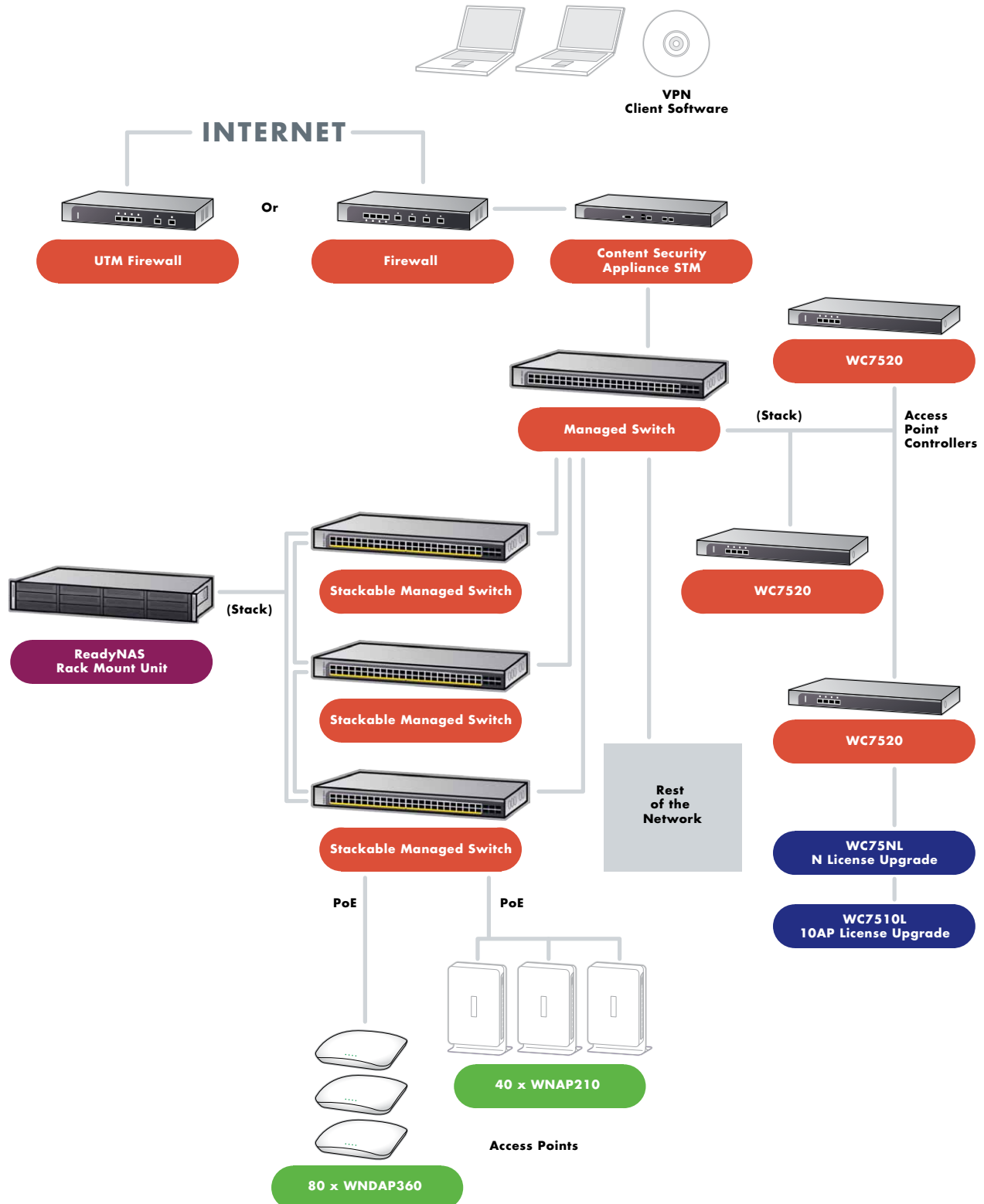
Connection Setup





Network Solution for an Enterprise Business, 250-500+ Users

Connection Setup



NETGEAR®

NETGEAR® Inc.
350 E. Plumeria Drive
San Jose, California 95134

Telephone: (408) 907-8000
Fax: (408) 907-8097

sales@netgear.com
www.netgear.com

NETGEAR, the NETGEAR logo, Connect with Innovation, PowerShift, ProSafe, ProSecure, RangeMax, ReadyNAS, ReadyNAS Remote, ReadyNAS Vault, Smart Wizard, Stora, X-RAID, and X-RAID2 are trademarks and/or registered trademarks of NETGEAR, Inc. and/or its subsidiaries in the United States and/or other countries. Other brand names mentioned herein are for identification purposes only and may be trademarks of their respective holder(s). Information is subject to change without notice.
© 2011 NETGEAR, Inc. All rights reserved. 09/29/11



This catalog is printed on 30% post consumer recycled paper.